



# RimpeX Site

Document Ref: RX-002-RimpeX-SITE

©RimpeX PMIS

Version: 2018.06



## Contents

1. Introduction
2. Capture issues and report from site
3. Notifications & reports
4. Take action & close issues Features
5. Benefits
6. Clash Analysis
7. Samples

## Introduction



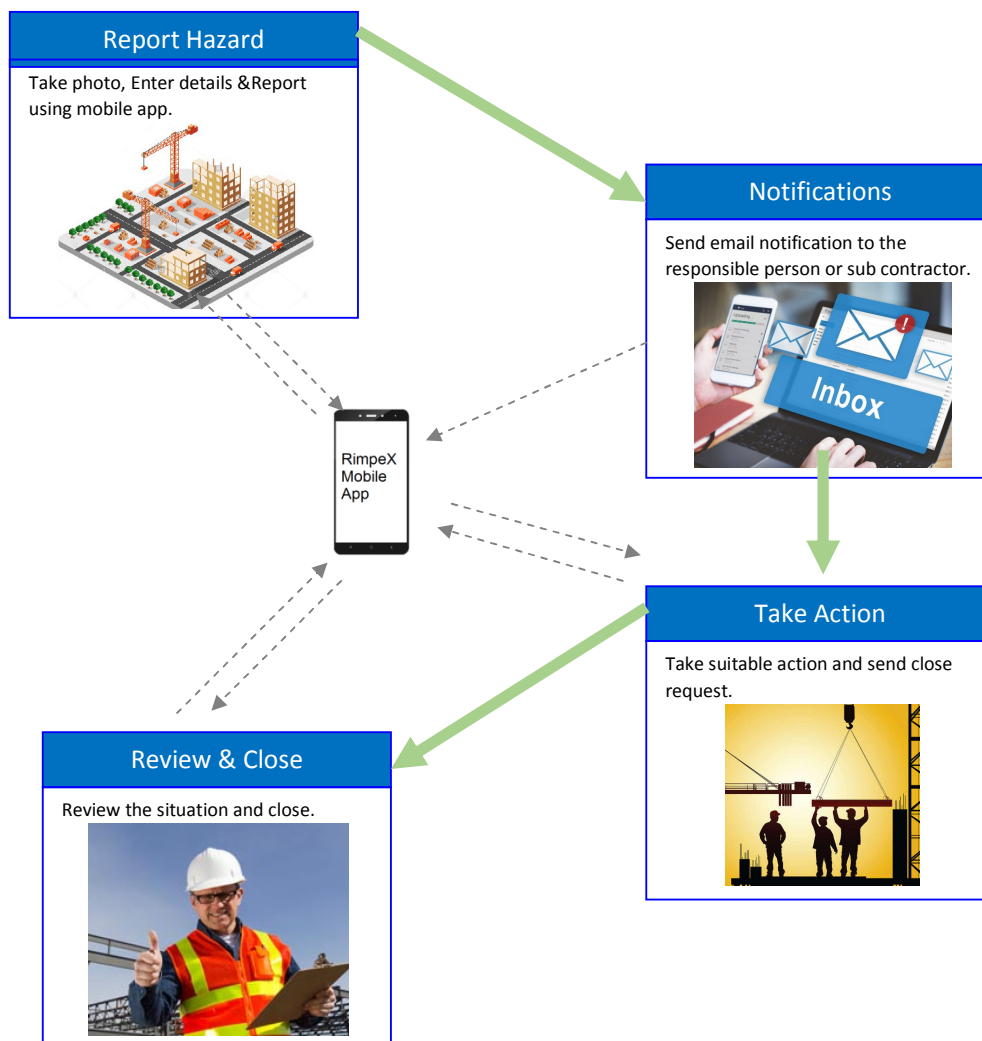
A complex project traditionally involves a huge amount of paperwork. Traditionally a person who has made an observation first notes it down on paper, then takes it to his/her office and feeds it to the computer for generating reports and sending official transmittals. There is also a possibility of misplacing the data and not reporting them. RimpeX SITE is an onsite data collection App which offers an easy and efficient way to capture field data, send reports and manage them.

RimpeX Site App is primarily designed to enable your mobile phone or tablet to view your project drawing at the construction site. All the team members of the project will have the same latest updated drawing to work on. In addition to satellite map overlay, the drawing will be aligned automatically based on your location at the site utilizing GPS functionality of the device you use. Its ability to display various information inside the drawing and use of various project forms are certain remarkable features of the app. RimpeX Site makes your life easier by doing your project in a smarter way and saves time and money.

In addition to the mobile application, its desktop version allows all the project team members to use on their desks so as to work on the latest updated drawing and hence reduces the use of large hard copy drawings in the construction site office.

RimpeX Site App is most suitable for infrastructure construction projects like Roads, Utilities, Bridges, Underpasses, Airports, Institutional Complexes, etc.

RimpeX hazard inspection and controlling system allows you to take picture of the hazard from the site using mobile app and to report to the responsible person or sub contractor with required details. Notifications will be sent automatically from the system to take action by the responsible person. They can post the new photo and comments after taking suitable corrective measures. And finally the safety professional can close the hazard after inspecting the situation. This method makes the hazard reporting without any time delay, automated follow-up and track progress on actions. Thus makes the site safer by reducing hazard response time. The process of inspecting and managing hazard is presented below:

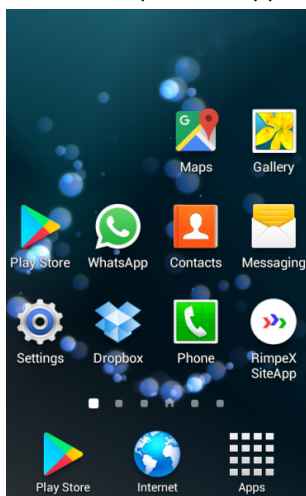


## How to capture issues and report from the site?

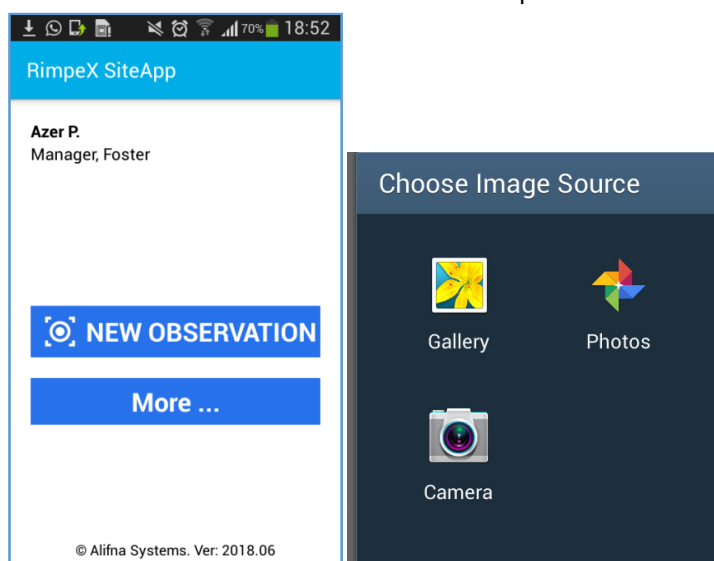
Defects recording requires your full attention on the field, but much time is lost in the office finishing the follow-up paperwork after on-site inspection. RimpeX site app makes it a lot easier for you to record defects, capture field data, send reports or official transmittals and manage them.

### 1. How to capture an observation using RimpeX Site App?

- Observation can be anything you would like to report. Example: non-conformance, snag, safety hazards etc.
- Click on RimpeX Site App on your smart phone or tablet



- Click NEW OBSERVATION and select Camera option



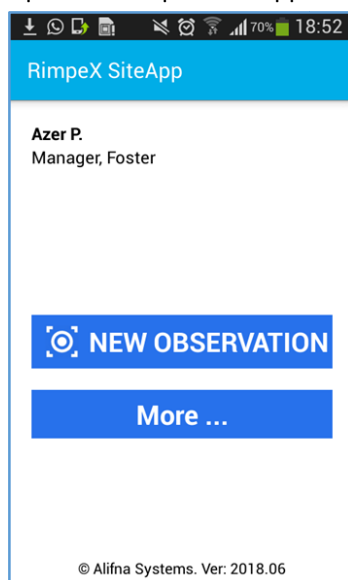
- Take picture of the safety hazard



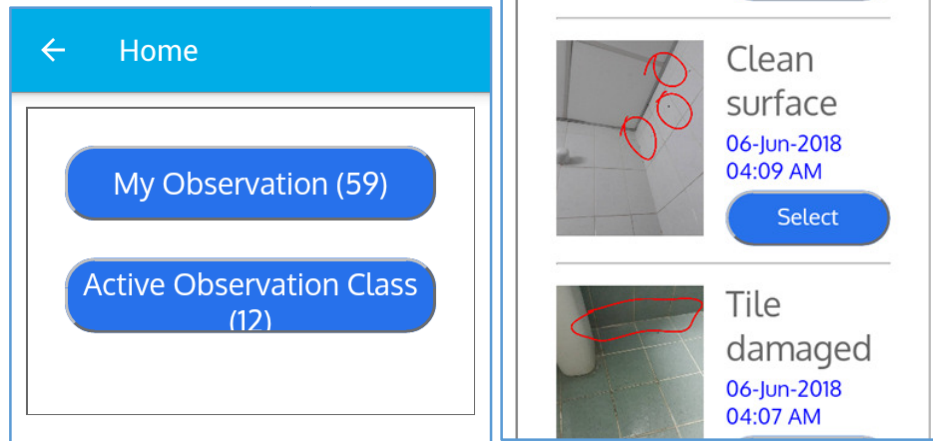
- Highlight specific area (optional)
- Enter a title (Optional) and Save. i.e. click OK.

## 2. How to report safety hazards using RimpeX Site App?

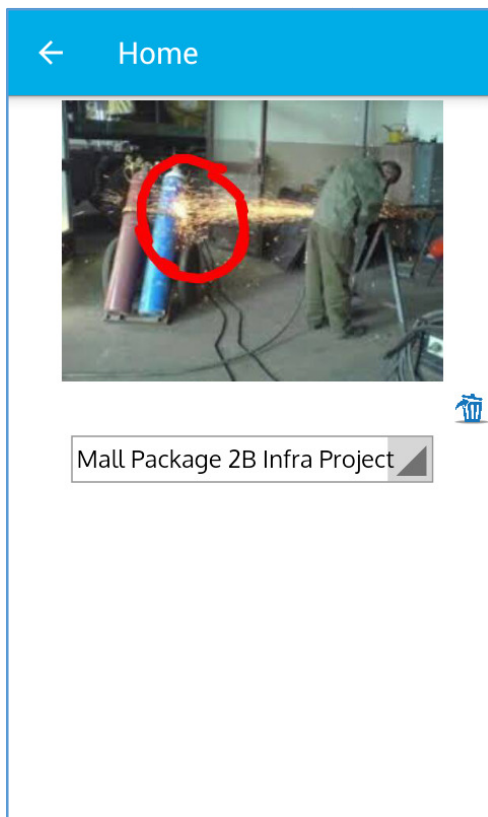
- It is necessary to have network connection to report a hazard but not necessary for posting observation
- Open the RimpeX Site App and click on More...




- Select my observations. This will display all your observations.




- Select the required photo
- Select the respective project from the drop box



- Enter hazard description

 Home

New Observation Class




**Hazard Description**  
cylinders expose to fire

**Recommandation**

REPORT

- Enter recommended action

 Home

**Hazard Description**  
cylinders expose to fire

**Recommandation**  
Change the position of  
cylinders and provide saftey  
training or warn the foreman

**Unsafe**  
☐ Condition  
☐ Act

**Severity**  
☐ Very Low  
☐ Low  
☐ Medium

REPORT

- Select Unsafe Condition or Unsafe Act
- Select Severity or Consequence
- Select Likelihood or Probability of Occurrence



← Home

Severity

☐ Very Low

☐ Low

☐ Medium

☒ High

☐ Very High

Likelihood

☐ Rarely

☐ Unlikely

☒ Possible

☐ Likely

☐ Highly Likely

REPORT

- Select target time for action. The targeted time will be automated after you input the occurrence and likelihood, but you are free to change it.

← Home

☒ High

☐ Very High

Likelihood

☐ Rarely

☐ Unlikely

☒ Possible

☐ Likely

☐ Highly Likely

Action within

0

Days

2

Hours

Zone/Tower

☐ Zone A

REPORT

← Home

☒ High

☐ Very High

Likelihood

☐ Rarely

☐ Unlikely

☒ Possible

☐ Likely

☐ Highly Likely

Action within

0

Days

1

Hours

Zone/Tower

☐ Zone A

REPORT

- Select Zone or Tower

← Home

0 Days 1 Hours

Zone/Tower

☐ Zone A

☒ Zone B

☐ Zone C

Level

☐ Ground Floor

☒ First Floor

☐ Second Floor

☐ Third Floor

☐ Fourth Floor

☐ Fifth Floor

REPORT

- Select Floor or Level
- Enter Location info. You have to enter detailed location so that the responsible person can identify the position of your observation.

← Home

☒ Second Floor

☐ Third Floor

☐ Fourth Floor

☐ Fifth Floor

Location

This is a sample location

Responsibility

☒ Azer P., Manager

☐ Jam M.K, Programmer

☐ Jamsheed. MK, Programmer

Alifna

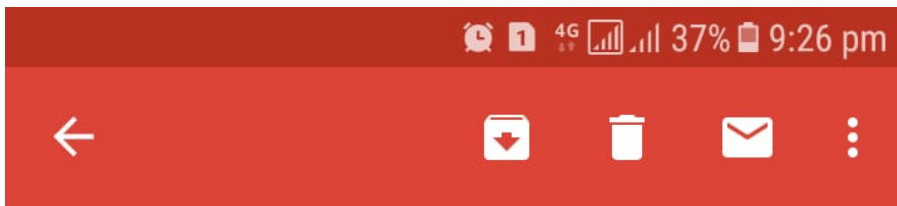
☐ Jamshid, Sys Admin

REPORT

- Select responsible persons. A list of people who are responsible for various activities and their designations will be displayed.
- Finally to report the hazard, click on REPORT button

## Hazard Notifications

An email notification will be sent to the responsible person as soon as the hazard is reported. You can manage the hazard on the site app




**Safety Hazard Notification****Priority : HIGH**

Status: **ACTIVE**

Hi, Azer P.

The following safety hazard has been observed at site.  
For your review / action.



**Unsafe Act :**  
cylinders expose to fire

**Recommendation**  
Change the position of cylinders and provide safety training or warn the foreman

**Responsibility**  
Azer P., Manager

**Priority** High  
**Consequence** High  
**Likelihood** Possible

**Recommended actions to be completed in 0 days, 1 hours**  
**On or before 20-26-2018 10:26 PM**

**Location**  
This is a sample location, Second Floor, Zone B

Observed:  
Azer P., Manager  
20-26-2018 09:26 PM

---

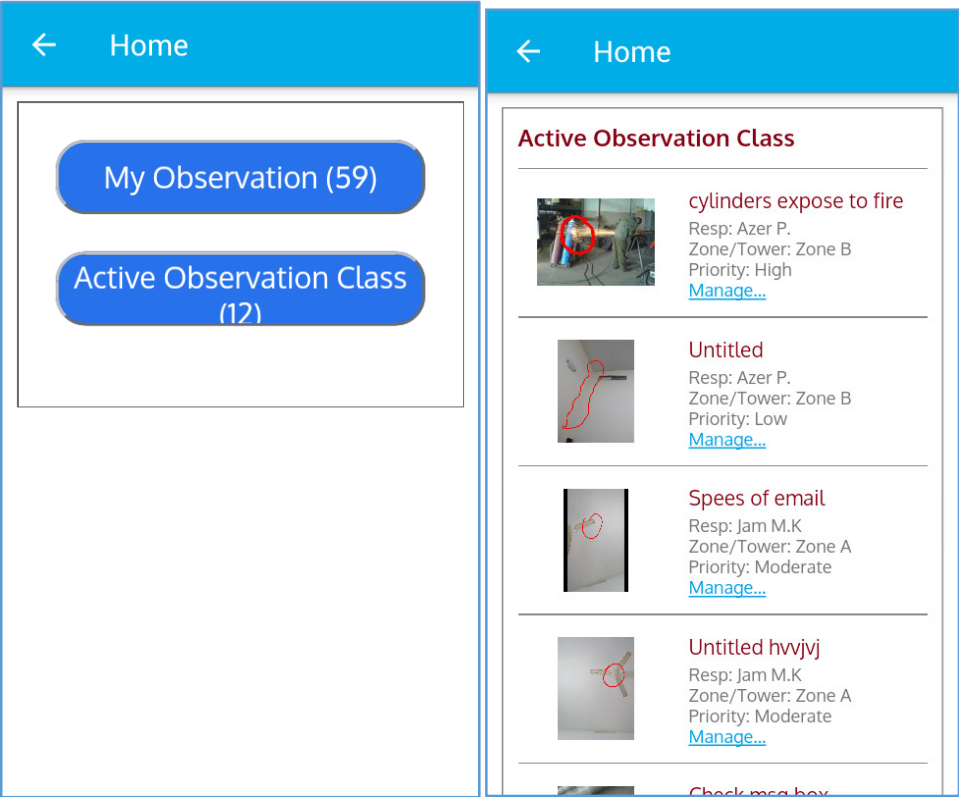
This is an automated email and please do not reply to this mail.

Review and take Action.

Once you receive email notification

Open the site app and click on more...

Click on active observation class; this contains all observations to which somehow you are related,either you have posted this observation or you are responsible to take action



Select the observation you want to manage; this will display all the details of the observation



← Home

Observation Class OBS-21

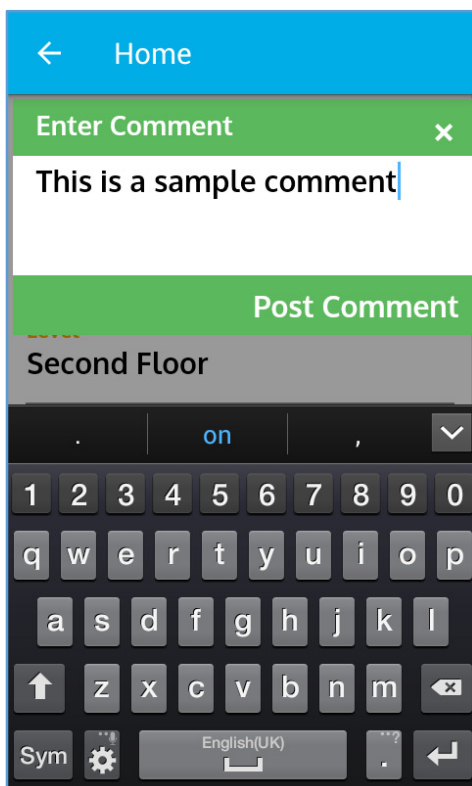


**Hazard Description**  
cylinders expose to fire

**Recommendation**  
Change the position of cylinders and provide safety

Comment Review Completed Add Photo

To **post a comment**: click on comment, enter comment and click on post comment



← Home

Enter Comment ×

This is a sample comment

Post Comment

Second Floor

on

1 2 3 4 5 6 7 8 9 0

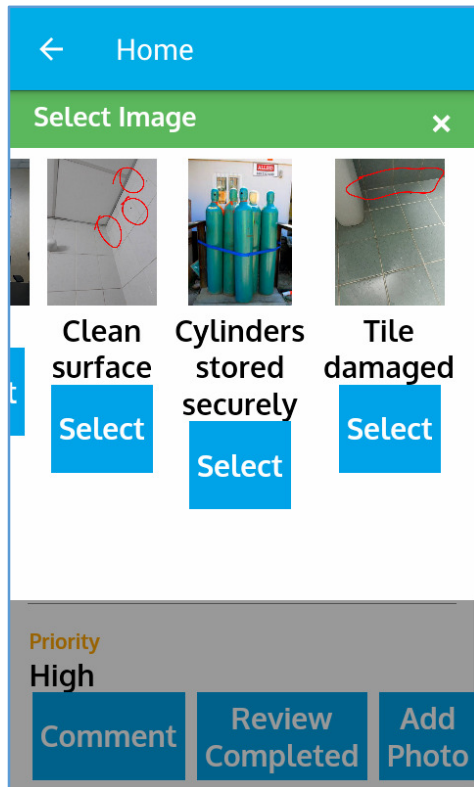
q w e r t y u i o p

a s d f g h j k l

↑ z x c v b n m ↵

Sym English(UK)

To **add a picture**(optional): click on add picture, select image from the list(first you have to create an observation. The images displayed are posted as observations in the site app), click on post picture



Once you have taken necessary actions, you may post comments or pictures and request to close the observation. Only the person who posted the observation can close the observation.

Click on review completed and confirm.

### Inspect and close

You may inspect site again or request further proof of action or suggest something. You may click on approve to close the observation once you are satisfied.



An email notification will be sent to the person responsible once you close the observation.

### Daily Observation Report

A daily observation report will be generated automatically. It can be customized according to the needs of any organization. This report will be use full for monitoring the safety hazards, risks and issues on a daily basis. And helps to assess the precision and safety level at the field.

**Construction Site**

- 📍 Get your projects drawing on your mobile phone/tablet
  - 📍 Zoom and find more details on a click
  - 📍 Satellite map overlay
  - 📍 GPS positioning of your drawing
- 📍 Minimize the use of hard copy drawings
  - 📍 Improved revision control
  - 📍 BIM capabilities
  - 📍 Customization unlimited

**Office**

- 🔍 Get additional information:
  - 🔍 Health & Safety Hazards
  - 🔍 Non-Conformance Reports
  - 🔍 Schedule & Work Progress
  - 🔍 Snag List
  - 🔍 Progress Photographs



## Features

### Drawing on your mobile phone



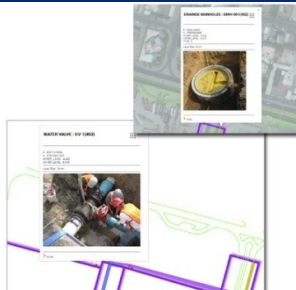
Get the project layout drawing on your mobile phone or tablet anywhere from the world. Always work on the latest updated shop drawing. Free from the nuisance of managing revisions. Minimize the use of large hard copy drawings.

### GPS Positioning



App automatically locates your position on the drawing and the drawing will be zoomed to the exact location on a single click. Its auto-rotation feature enables the drawing rotate automatically based on north direction of your drawing.

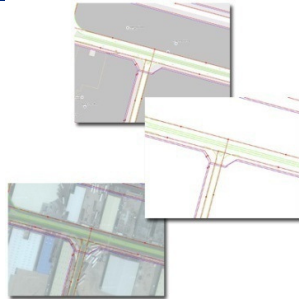
### Get Object Properties



Click on an object to get additional information attached. For example, if you click on a Drainage manhole, initially it will show you its CAD details. It is powerful to show its schedule, progress photos, NCS, HSE and other data associated on it.

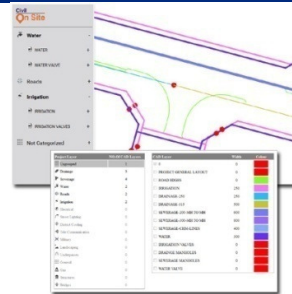
## Features

### Map Overlay



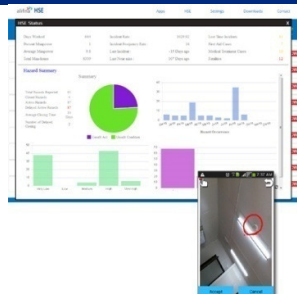
RimpeX Site App works with your project CAD drawing. It also overlays on the Google satellite or road maps on a single. This feature is beneficial to locate and compare with the existing features and structures at site.

### Project Layers



RimpeX Site groups your CAD layers in to logical project layers like Roads, Structures, Drainage Network, Water Network, etc. This method allows the users to show or hide the desired section of the project very easily.

### Linked Modules



RimpeX Site also works with other modules of Alifna project monitoring and controlling application. If you are using those modules, you can configure to use on the OnSite drawing like NCR, HSE hazards, etc.

## Benefits

### Minimize Hard Copy Drawings At Site



Forget large size hard copy drawings to bring at site. Use your mobile phone or tablet application to open drawings, zoom automatically the location on the drawing where you are standing.

### Reduces printed drawings in the office



Why you need to print drawings for simple reasons? Open your desktop application and get the details from the drawings wherever you want.

### Revision Control



When there are revisions in the drawings, it is always a challenge to ensure the entire project team is referring the latest revision. RimpeX Site updates everyone with the latest revision of the project drawing.

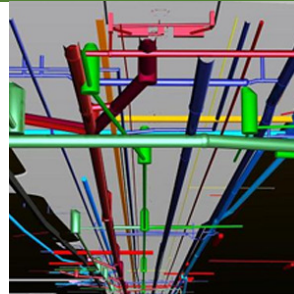
## Benefits

### Save Time & Money



If the information is unable to get at the right time, we may have to spend relatively longer time to get it by involving others as well. Increasing effective manpower utilization and minimizing hard copy drawings.

### BIM Enabling Capabilities



RimpeX Site is compatible to receive input files from most common CAD and BIM software especially from AutoCAD and Civil 3D.

### Customization Unlimited



One of widely accepted feature of RimpeX Site is its ability to support customizing the system based on your company/project requirements.

## FEATURES & BENEFITS

### Features



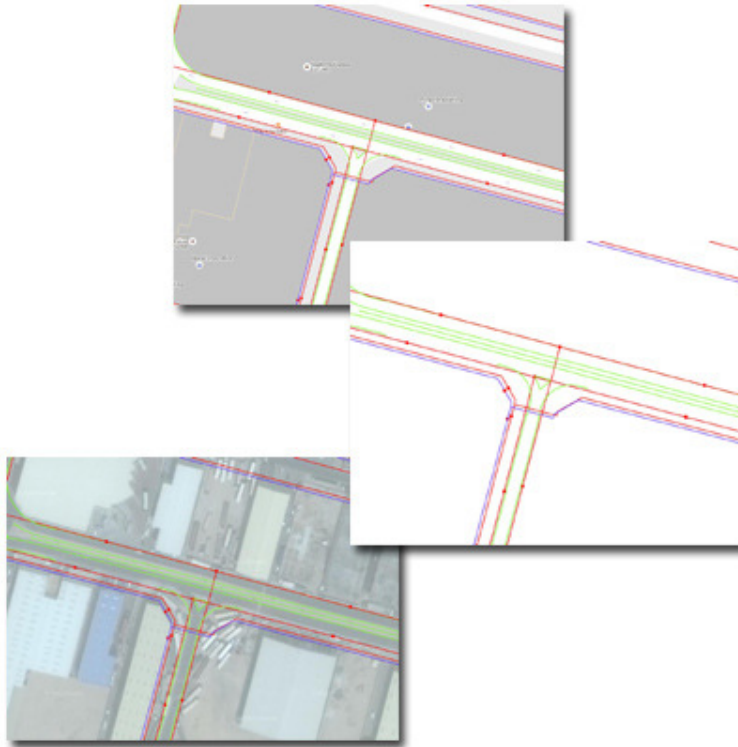
#### Drawing on your mobile phone

Get the project layout drawing on your mobile phone or tablet anywhere from the world. Always work on the latest updated shop drawing. Free from the nuisance of managing revisions. Minimize the use of large hard copy drawings.



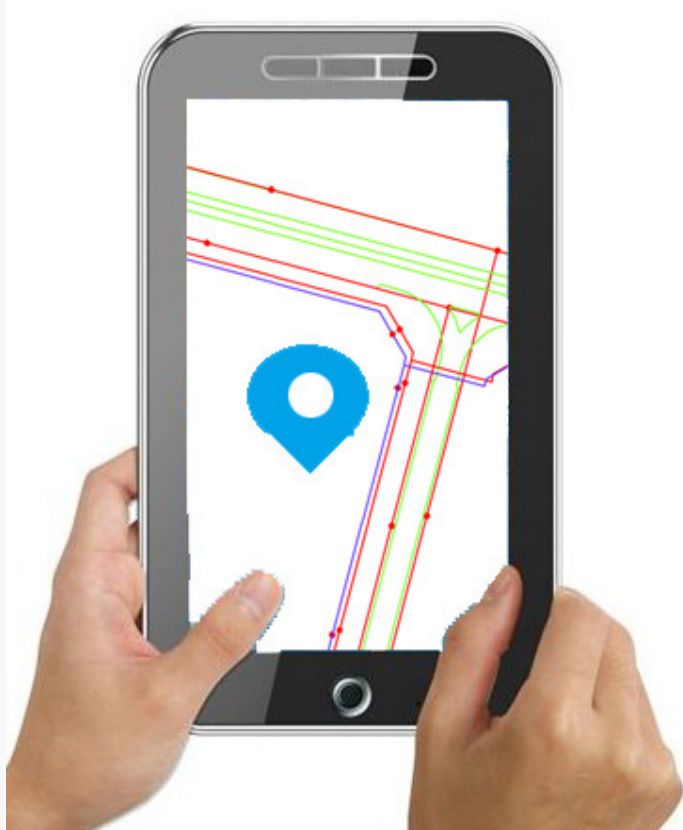
#### Satellite Map Overlay

RimpeX Site App works with your project CAD drawing. It also overlays on the Google's satellite or road maps on a single. This feature is beneficial to locate and compare with the existing features and structures at site.



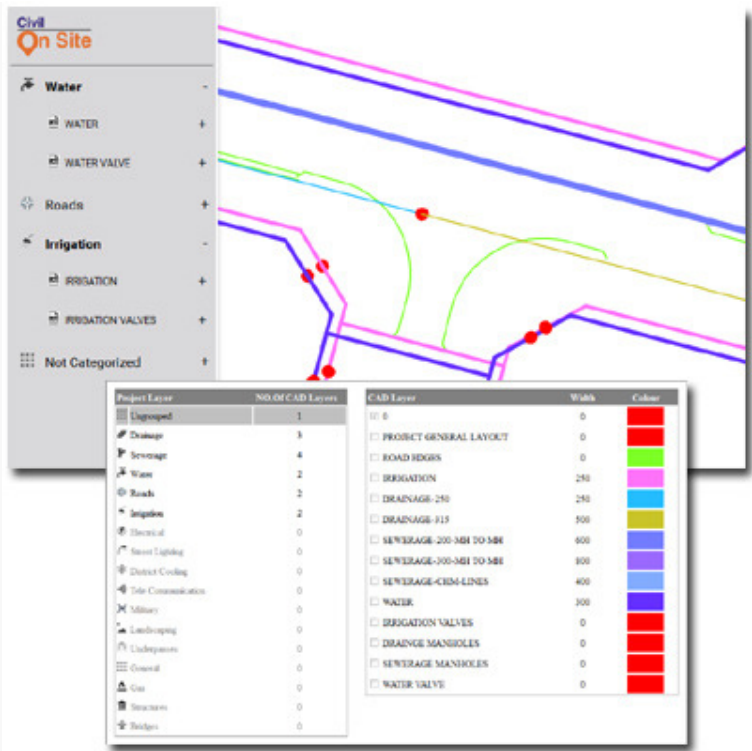
#### GPS Positioning

RimpeX Site App automatically locates your position on the drawing and the drawing will be zoomed to the exact location on a single click. Its auto-rotation feature enables the drawing rotate automatically based on north direction of your drawing.



### Project Layers

RimpeX Site groups your CAD layers in to logical project layers like Roads, Structures, Drainage Network, Water Network, etc. This method allows the users to show or hide the desired section of the project very easily. You can also set different line colour and line widths for the layers.



Get Object Properties

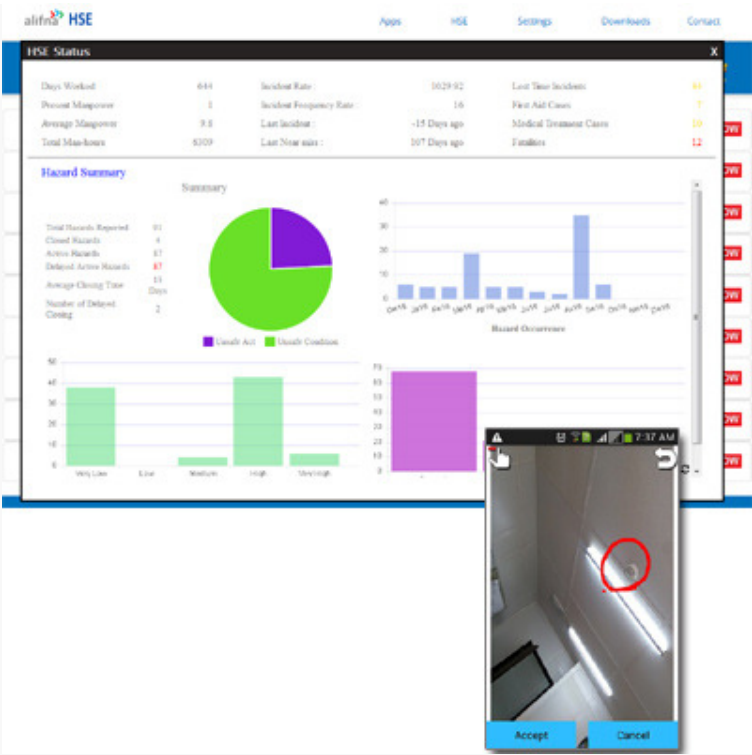
Click on an object to get additional information attached. For example, if you click on a Drainage manhole, initially it will show you the invert level, cover lever, type, coordinate, etc. When you expand more, it is powerful to show its schedule, progress photos, NCS, HSE and other data associated on it.





### Linked Modules

RimpeX Site also works with other modules of Alifna project monitoring and controlling application. If you are using those modules, you can configure to use on the OnSite drawing like NCR, HSE hazards, etc.



Benefits

 Minimize Hard Copy Drawings At Site

Forget large size hard copy drawings to bring at site. Use your mobile phone or tablet application to open drawings, zoom automatically the location on the drawing where you are standing.





### Minimize the use of hard copy drawings in your office

Why you need to print drawings for simple reasons? Open your desktop application and get the details from the drawings wherever you want.





### Revision Control

When there are revisions in the drawings, it is always a challenge to ensure the entire project team is referring the latest revision. RimpeX Site updates everyone with the latest revision of the project drawing.



### Clash Analysis

RimpeX Site is capable of doing clash analysis automatically from the CAD drawing without any additional input. A single click will do the clash analysis and utility crossing locations will be displayed with the following symbols:

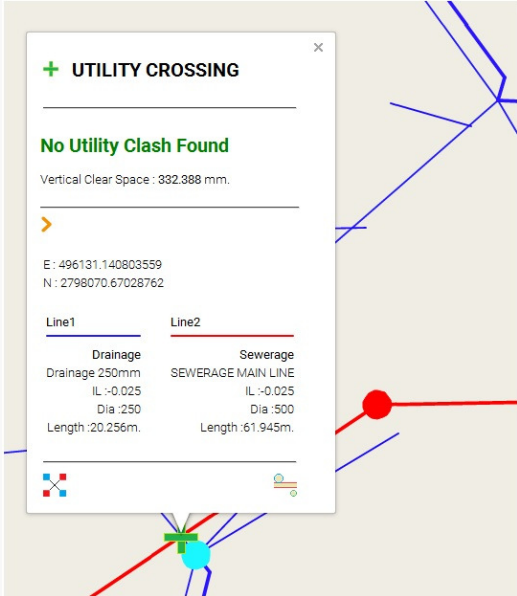
-  Utility crossing location without clash
-  Critical clash location

When a non-clash location is selected, then the following information will be displayed on screen.

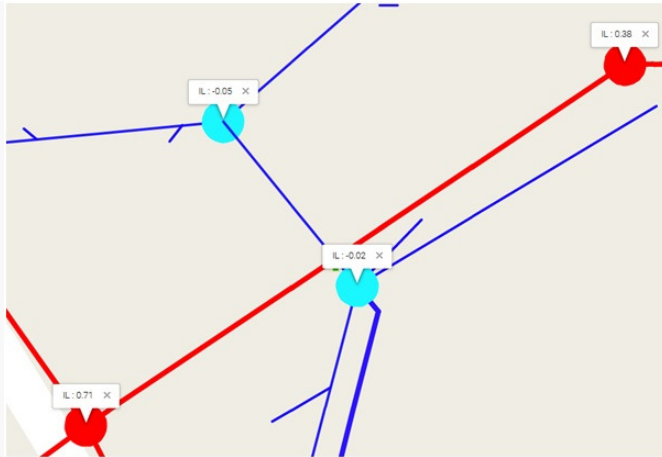


When a clash location is selected then the following information will be displayed.

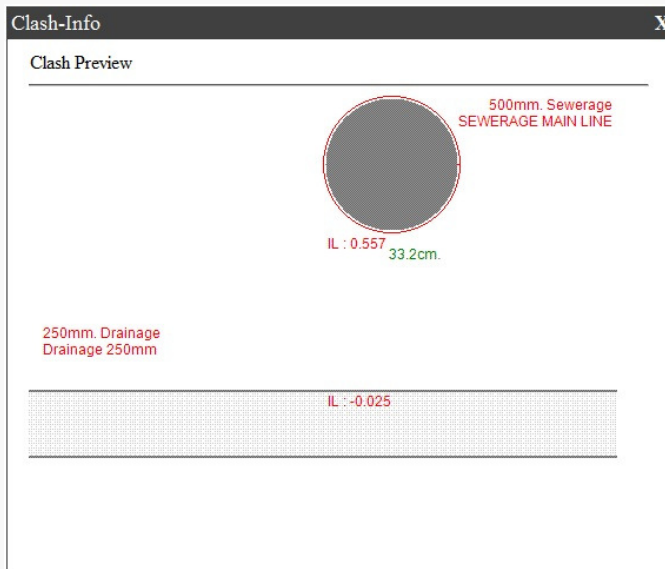
Click more to see detailed information on the clash as shown below



You can also display the end invert level of the two utilities by clicking on the button [btn]



Generate cross-section drawing of the utility crossing location



Clash analysis is worth doing before construction in utilities projects to ensure all gravity lines are designed to construct without any clashes.

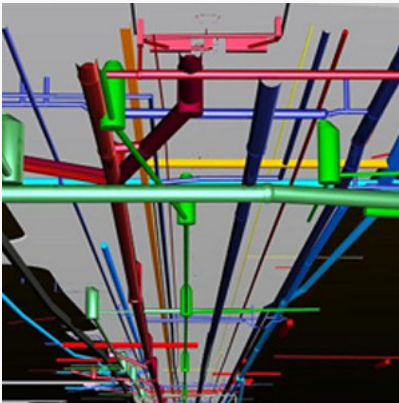
### Save Time & Money

If the information is unable to get at the right time, we may have to spend relatively longer time to get it by involving others as well. This is usually happen in projects. By increasing effective manpower utilization and minimizing hard copy drawings, direct and indirect cost will be reduced.



### BIM Enabling Capabilities

RimpeX Site is compatible to receive input files from most common CAD and BIM software especially from AutoCAD and Civil 3D.



## CLASH ANALYSIS

### *Why do Clash Analysis?*

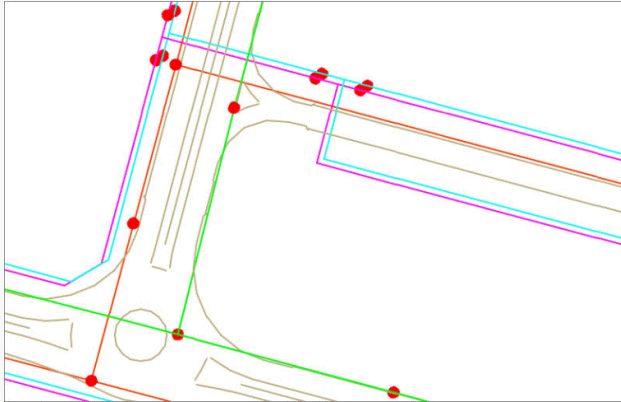
Since there are various utility pipeline networks in an infrastructure project, it is always a good practice to check the levels at every pipe crossing locations. Sometimes different pipeline networks will be designed by different consultants in different software. There may be changes proposed locally due to clash with other existing structure. There can be various other reasons for impossible crossing of two pipe networks. If this check is not done before starting the construction works, sometimes considerably big amount to be spent to rectify the case redoing the work with redesigned networks. It may affect on the project schedule as well. Therefore, it is always recommended to do clash analysis of different pipeline networks before begin the construction works.



### *Where it is applicable?*

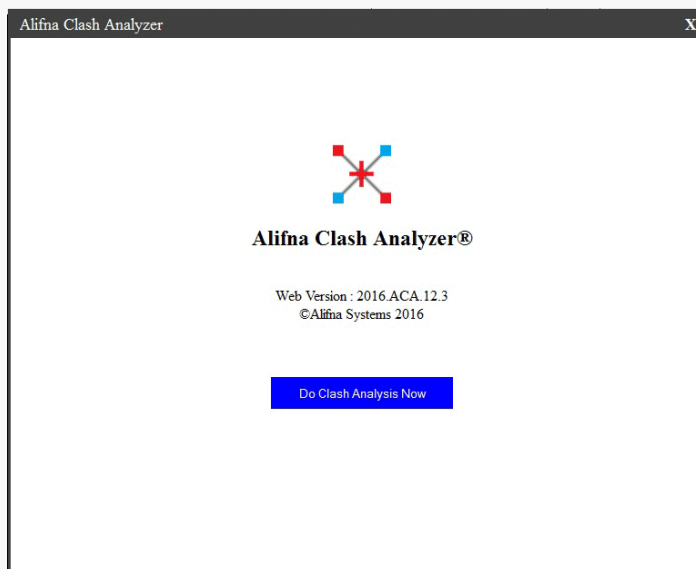
RimpeX Site Clash Analysis is applicable only in infrastructure projects where there are two or more pipeline networks present in the project, such as drainage network, sewerage network, district cooling network, water network, irrigation network, LPG network, etc.





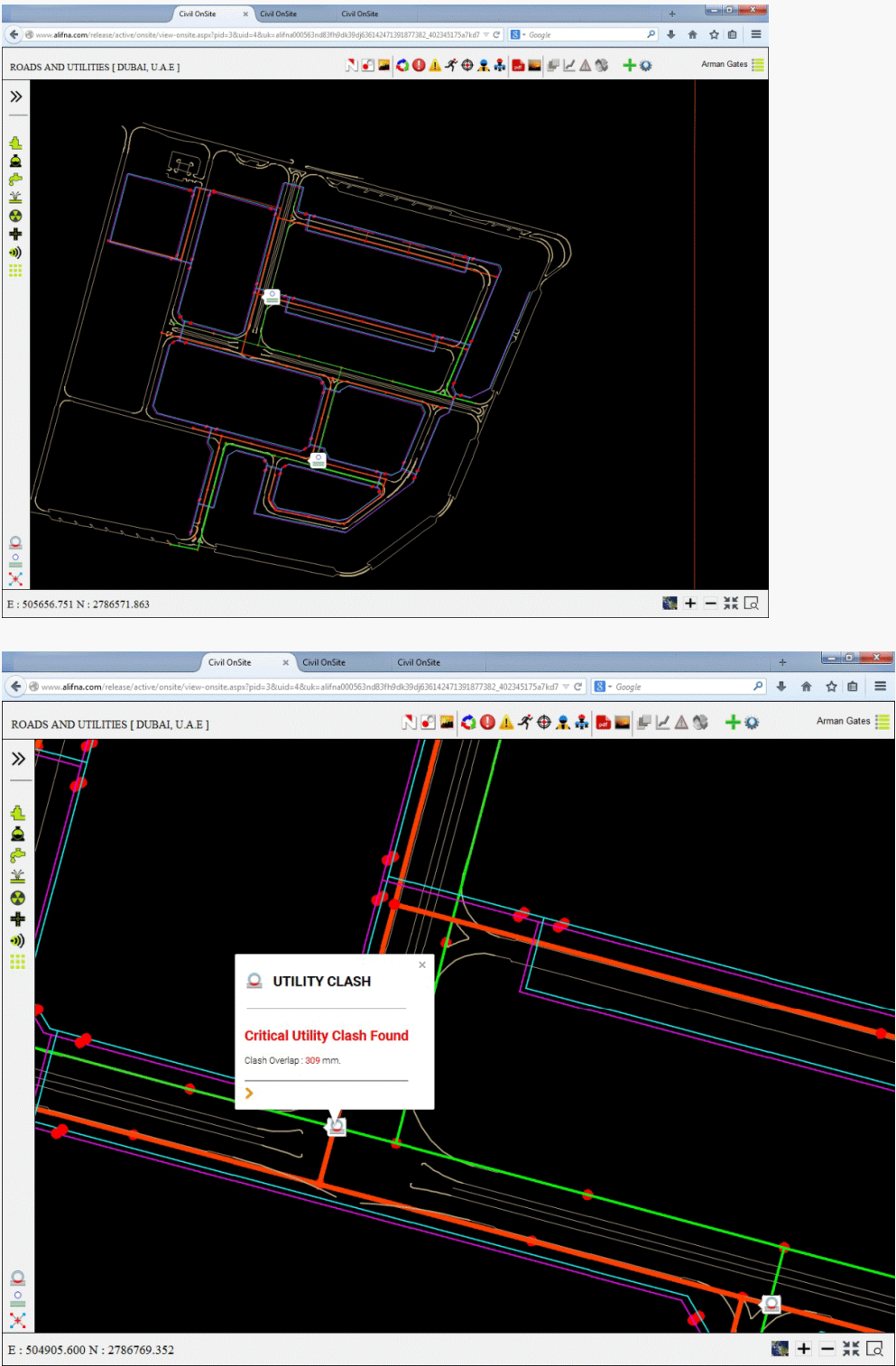
*How to do Clash Analysis in Rimpex Site?*

- **Assign utility network drawing**  
Attach utility network drawing in Alifna CAD Manager application. AutoCAD DWG file is required for this purpose with different layers of various networks. Each layer will be assigned with diameter. Therefore, similar pipes having same diameter should be in a layer. Invert levels of manholes, chambers and valves will be read automatically from its BLOCKs in the AutoCAD file.
- **Select network layers for clash analysis**  
All relevant layers to perform clash analysis should be selected in the CAD Manager application.
- **Perform Clash Analysis**  
After performing the clash analysis, you can view the safe crossing locations and pipeline clashing locations. Click on the icon to see more details



- **See the Clash Analysis results**

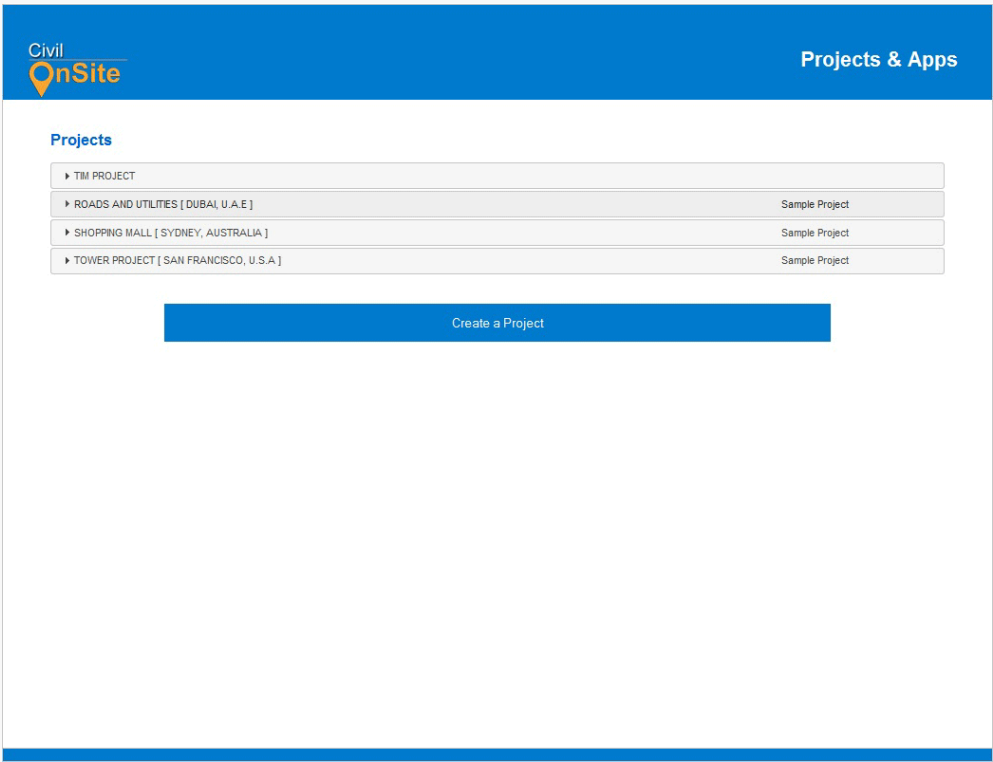
After performing the clash analysis, you can view the safe crossing locations and pipeline clashing locations. Click on the icon to see more details as shown below:





# Samples

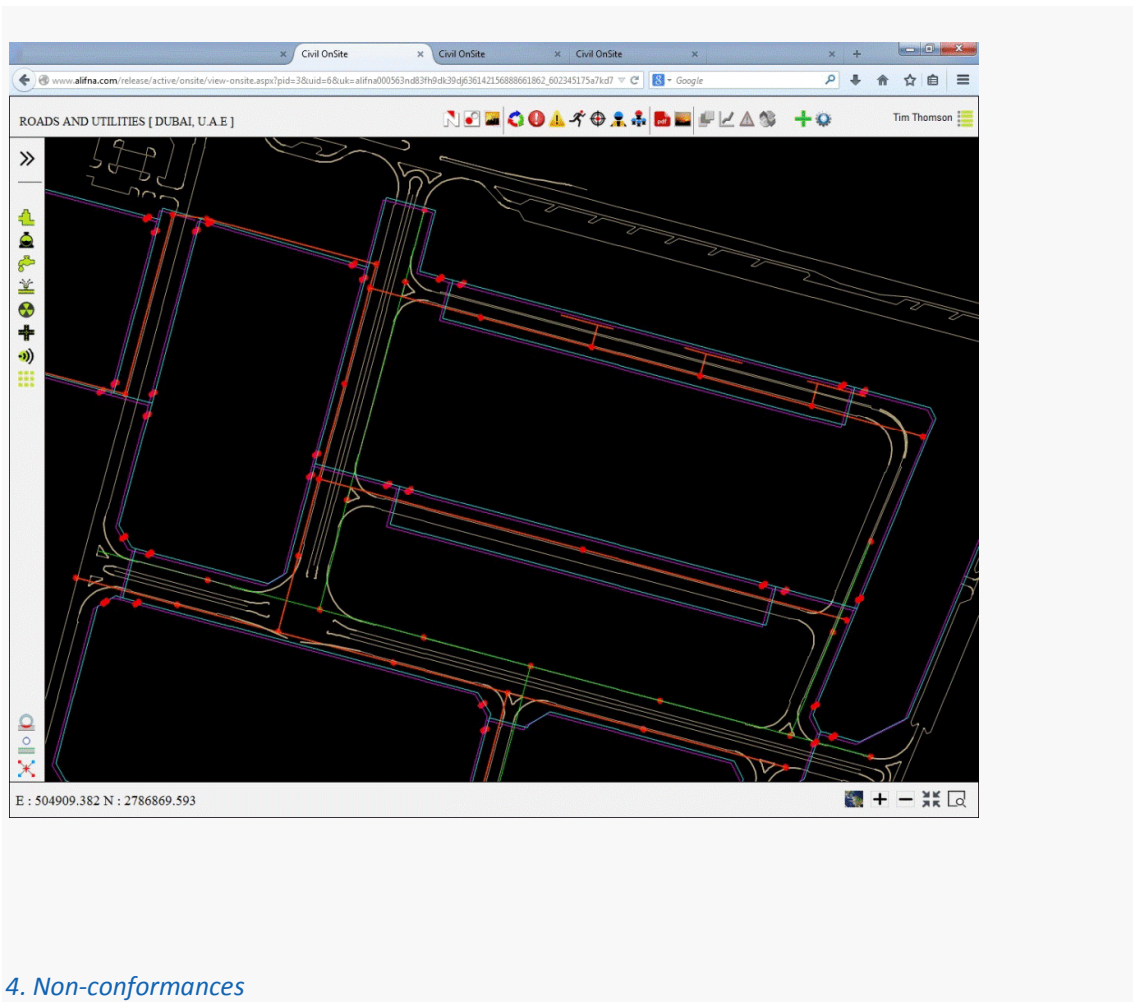
## Open a sample project from Projects and Apps

Sign in to display Projects and Apps, expand a sample project and select RimpeX Site. Please be patient while loading RimpeX Site.






### 3. Project progress photos

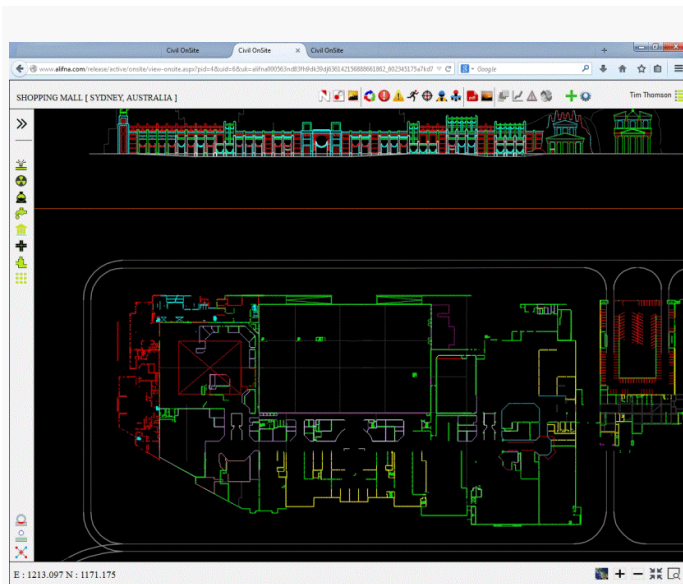
- **View project progress photo posted from the site**  
Click on  button to display progress photo icons on the drawing. To open progress photos, click on the  icons on the drawing.



#### 4. Non-conformances




- **View non-conformances posted from the site**

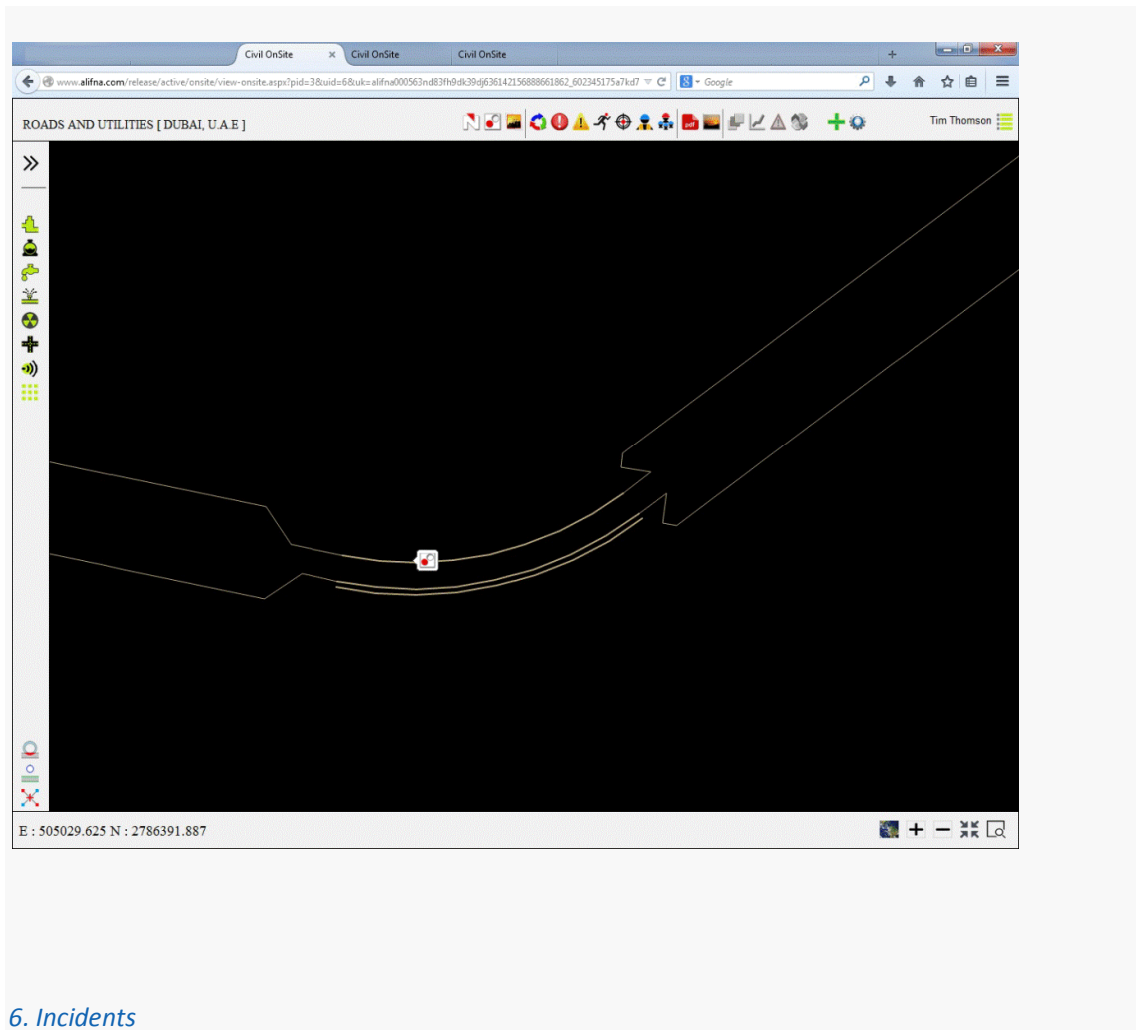
Click on  button to display NCR icons on the drawing. To open NCR, click on the  icons on the drawing. Click on  to show more details on the NCR.






## 5. Snags

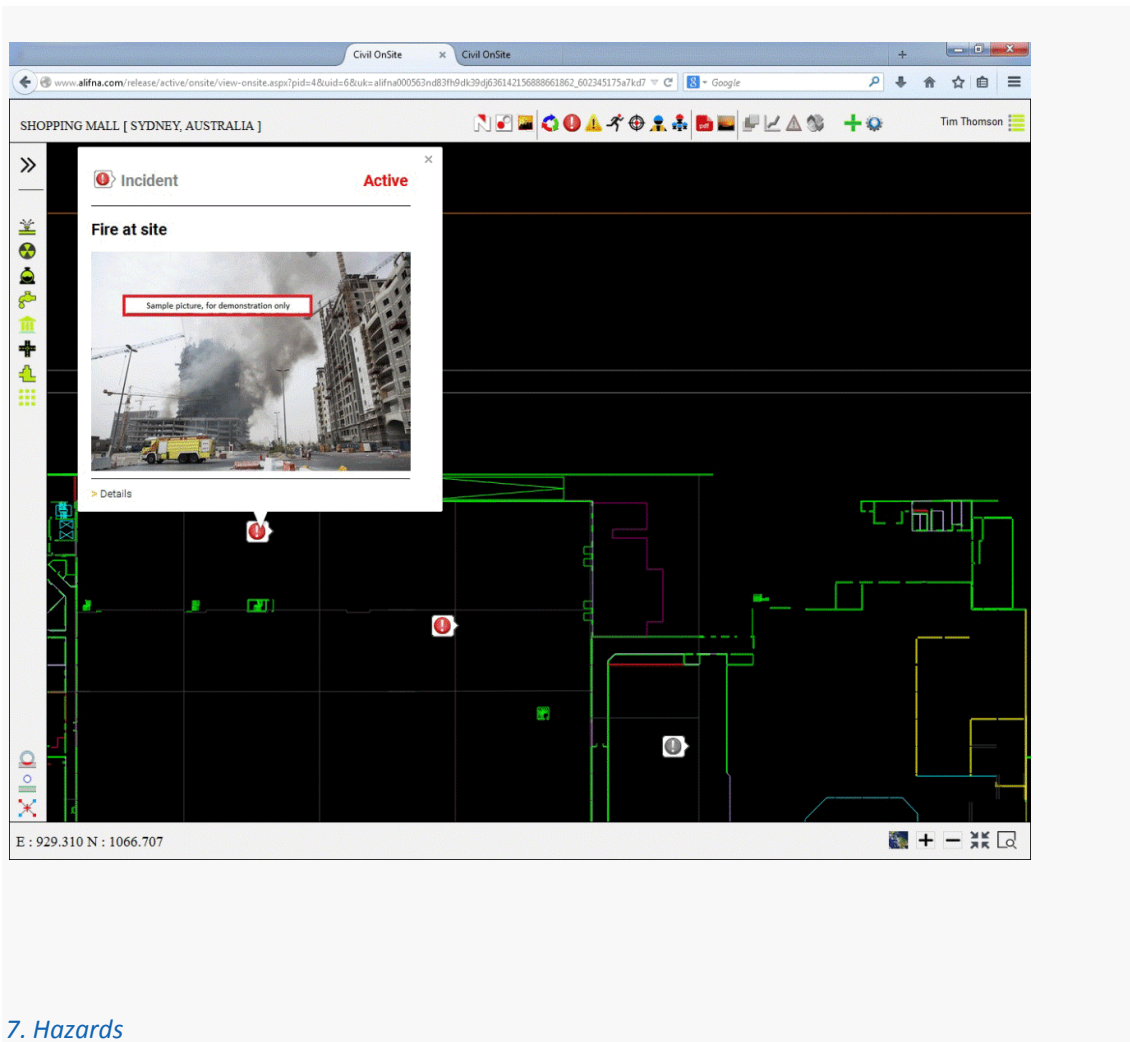
- **View snags posted from the site**

Click on  button to display snag icons on the drawing. To open snags, click on the  icons on the drawing. Click on  to show more details on the snag.






- **View incidents posted from the site**

Click on  button to display incident icons on the drawing. To open incidents, click on the  icons on the drawing. Click on  to show more details on the incident.

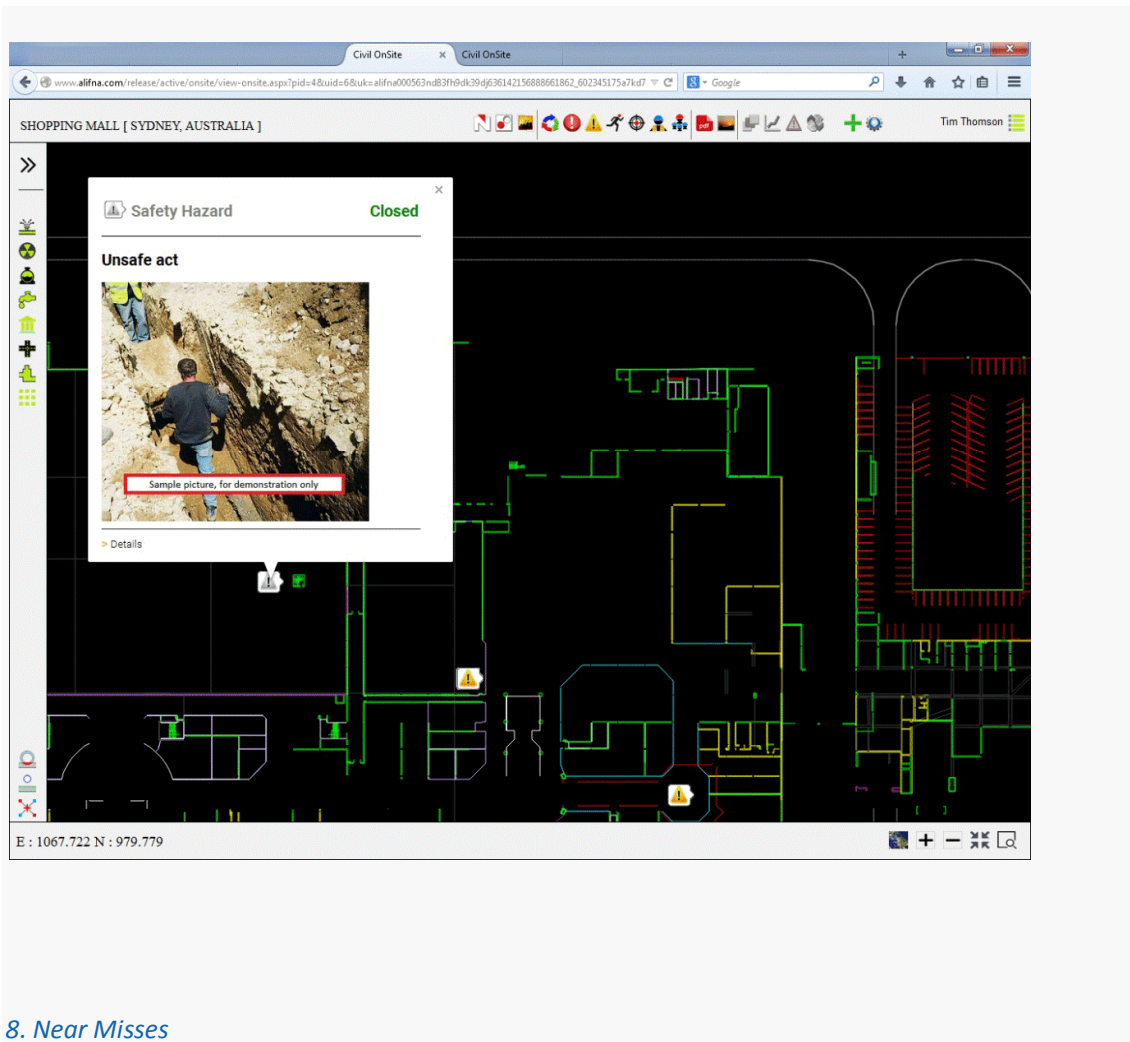


## 7. Hazards

- **View hazards posted from the site**




Click on  button to display hazard icons on the drawing. To hazards, click on the  icons on the drawing. Click on  to show more details on the hazard.



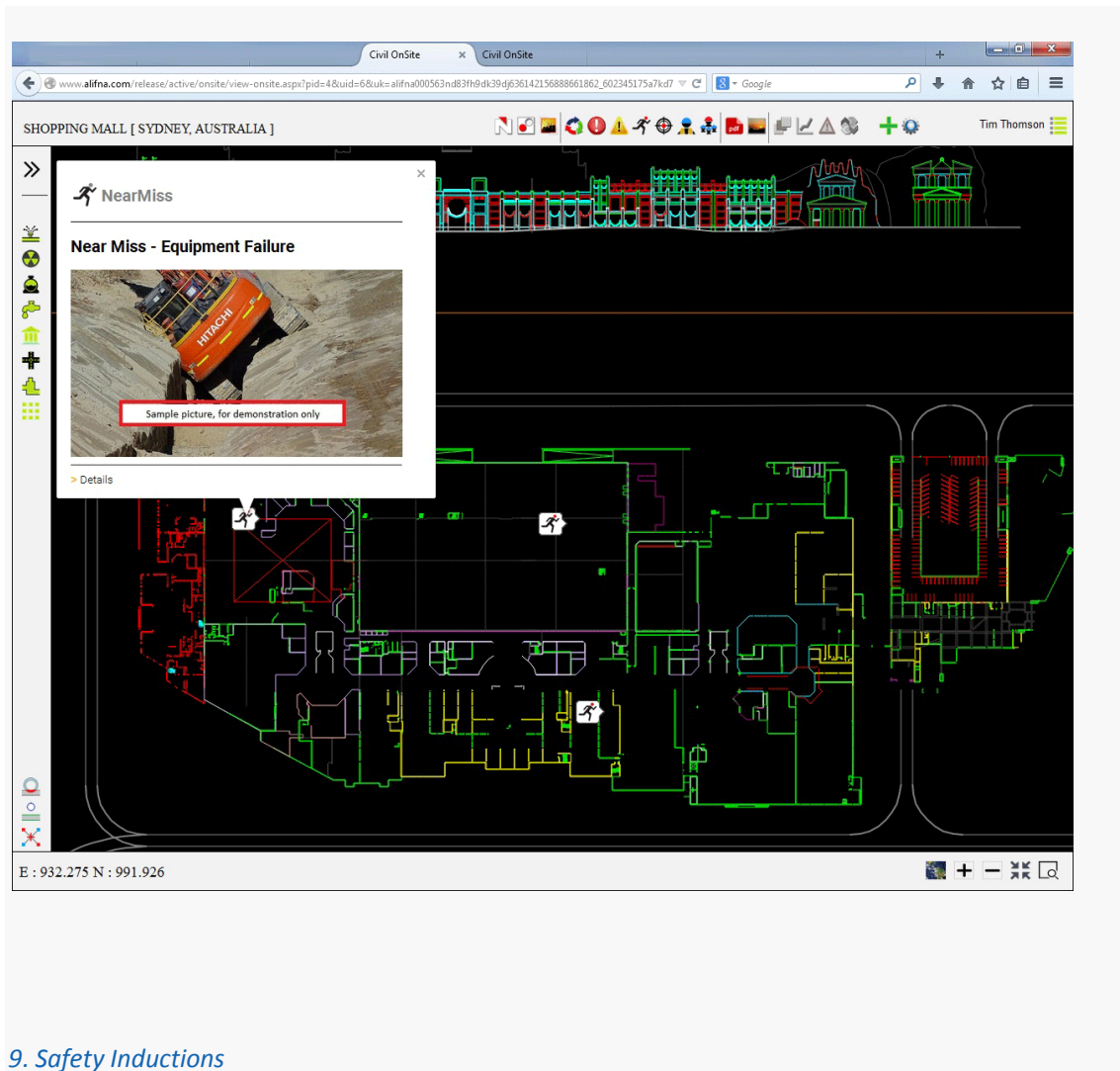


### 8. Near Misses

- View near misses posted from the site




Click on  button to display near miss icons on the drawing. To open near misses, click on the  icons on the drawing. Click on  to show more details on the near miss.

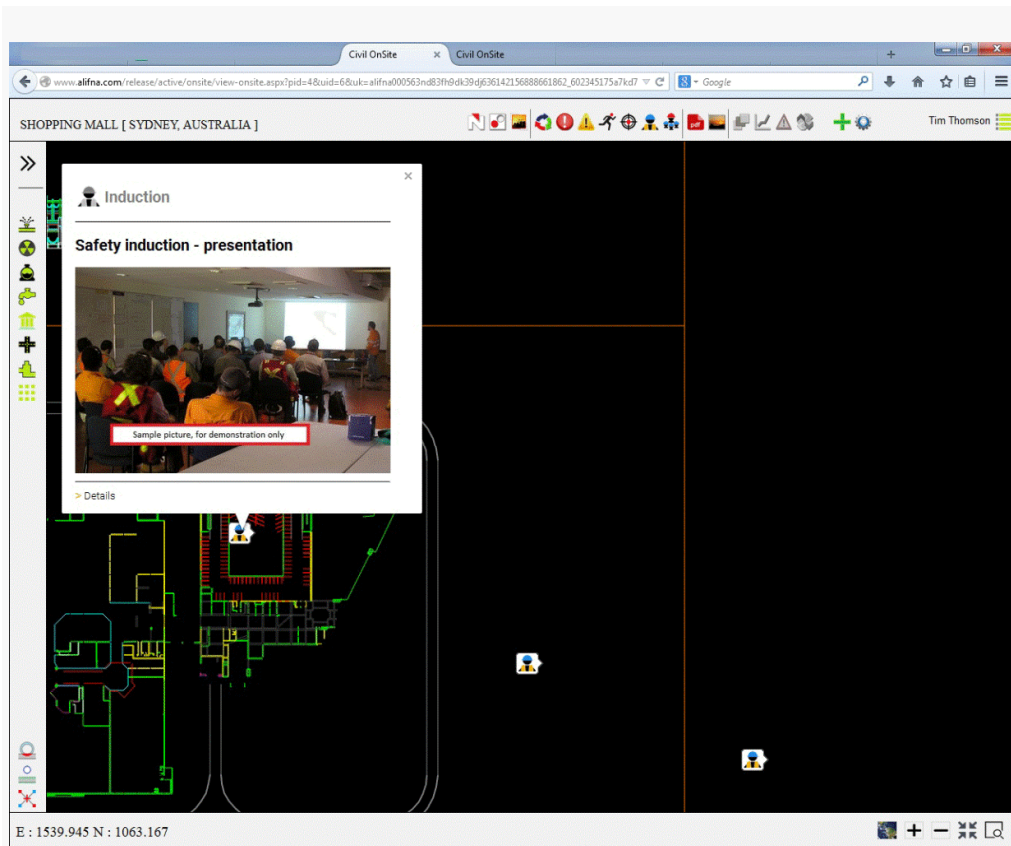




## 9. Safety Inductions




- **View safety inductions posted from the site**

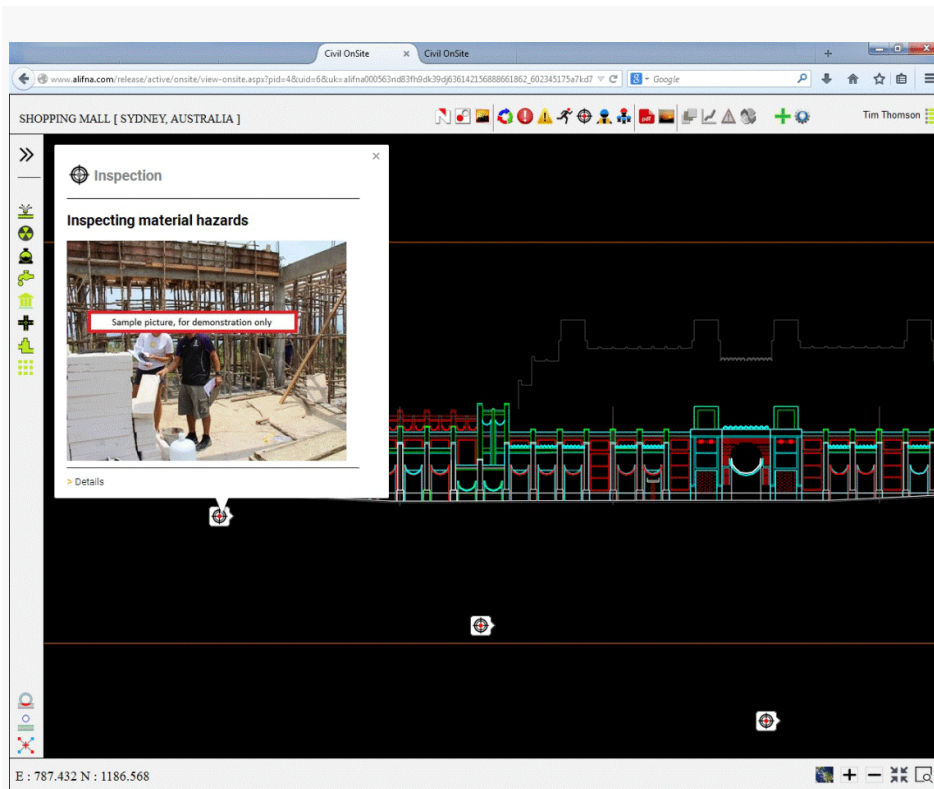
Click on  button to display induction icons on the drawing. To open inductions, click on the  icons on the drawing. Click on  to show more details on the induction.



### 10. Safety Inspections




- View safety inspections posted from the site

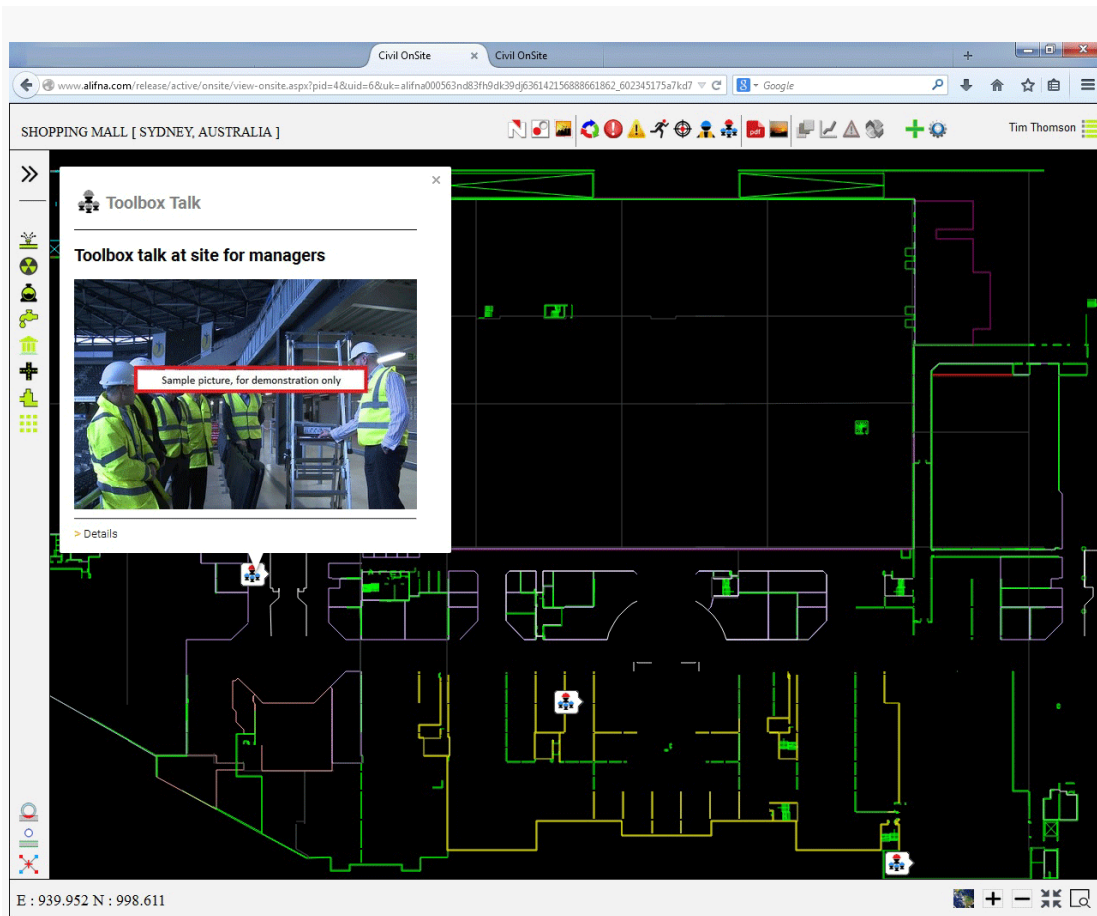
Click on  button to display inspection icons on the drawing. To open inspections, click on the  icons on the drawing. Click on  to show more details on the inspection.



### 11. Toolbox Talks





- **View toolbox talks posted from the site**

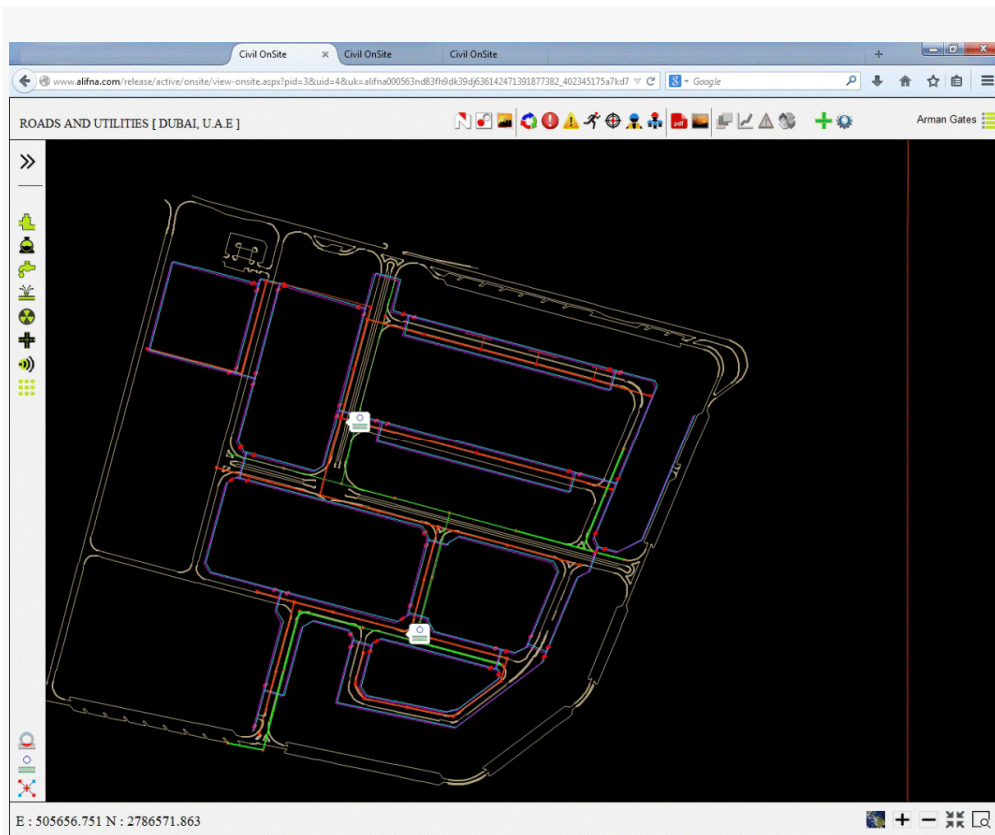
Click on  button to display toolbox talk icons on the drawing. To open toolbox talks, click on the  icons on the drawing. Click on  to show more details on the toolbox talk.



## 12. Utility Crossing





- View utility safe crossing locations

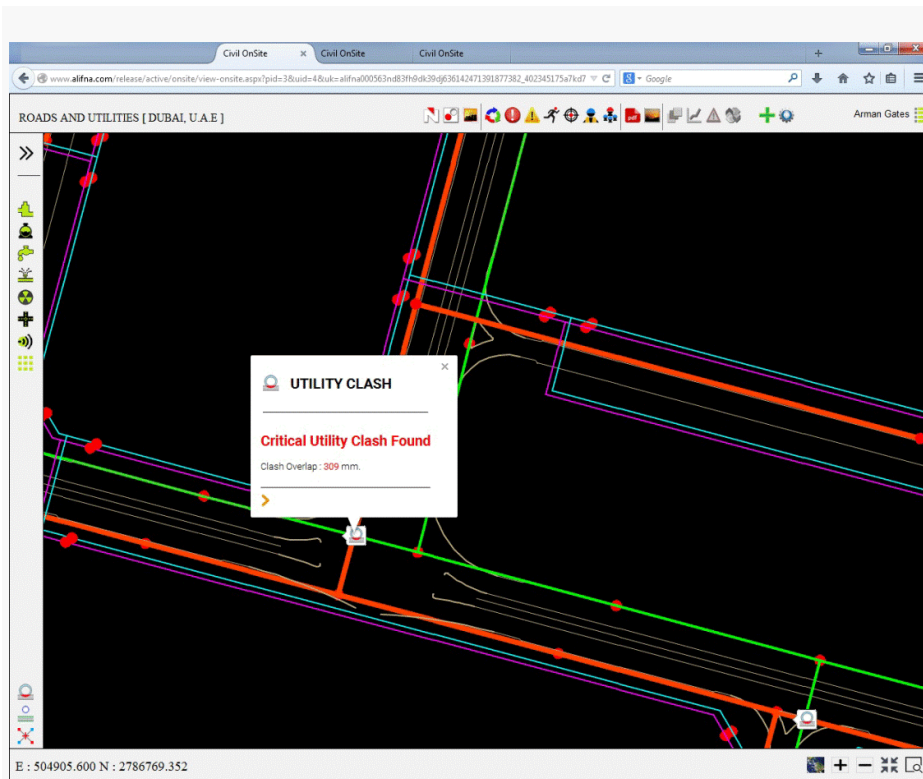
Click on  button to display utility crossing icons on the drawing. To open utility crossing locations, click on the  icons on the drawing. Click on  to show more details on the crossing locations. Click on  to show invert levels of both the pipe ends.



### 13. Utility Clash

- View utility clash locations

Click on  button to display utility clash location icons on the drawing. To open utility clash locations, click on the  icons on the drawing. Click on  to show more details on the utility clash. Click on  to show cross section drawing of the clash location.



### NCR Transmittals

#### Web Application

Select the email link or Expand the tree view of NCRs or Snag list and select the NCR or Snag you want to transmit. Select print preview button to print hard copy to transmit to the recipient officially. Contact Alifna system administrator to configure transmittal form. Usually, document controller is responsible for transmitting the document

### NCR Summary Email Reports

- Automated email report will be received from the Alifna server on weekly or monthly basis if the NCR or Snag section is configured to send. Contact Alifna system administrator to configure weekly or monthly