



RimpeX BIM

Document Ref: RX-005-RimpeX-BIM

©RimpeX PMIS

Version: 2018.06

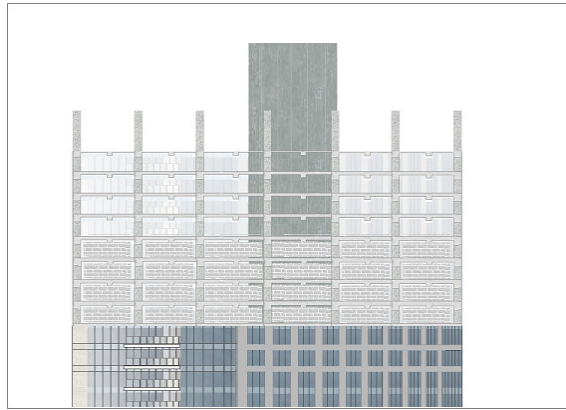
RimpeX BIM Dashboard

BIM (Building Information Modelling) is an intelligent 3D model-based process that gives architecture, engineering, and construction (AEC) professionals the insight and tools to more efficiently plan, design, construct, and manage buildings and infrastructure. BIM is a process for creating and managing all of the information on a project – before, during and after construction. The output of this process is a digital description of every aspect of the built asset. Research suggests that BIM provides an effective tool in improving certain aspects of the delivery of projects particularly cost, time and communications.



How is RimpeX BIM different from other BIM solutions?

RimpeX BIM is an interactive and a much simpler form of other BIM models. RimpeX BIMs are developed according to the project drawings and there is no burden on the customer to provide extra data as there is no need to do so. The cost for producing RimpeX BIMs are less in comparison to other BIMs due to its compact structure. RimpeX BIM is an add-on service provided by RimpeX and will be implemented by the RimpeX Implementation Team.



Advantages of using RimpeX BIM:

RimpeX BIM brings you the project data on an interactive real-time model in the following ways:

- It helps you to get a visual overall progress of the project.
- View level wise progress, schedule updates, drawings, etc.
- You can monitor active issues, safety hazards and other different types of progress on the project elevation and manage them easily.
- You will be able to pinpoint the exact location of any activity without actually visiting the site.
- View WBS level objects and related activities on the drawing.

Construction project managers that utilize BIM technology report:

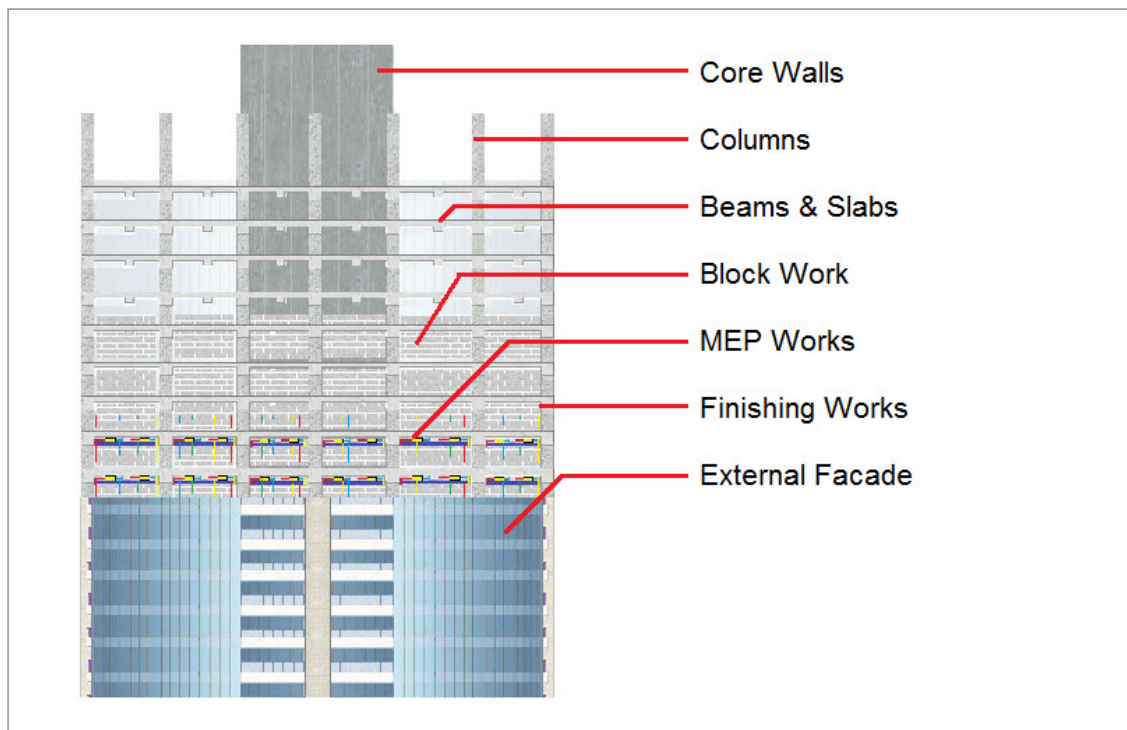
- Fewer unplanned changes
- Less project disruption
- Reduced costs
- Higher productivity
- Faster project completion
- Better customer satisfaction
- Increased ROI

BIM makes it easier to identify and fix potential problems very early in the process – before you even get to the construction site. Virtual modelling allows for more precise planning, which reduces errors and omissions, shaving big money off the project bottom line.

Visual Progress:

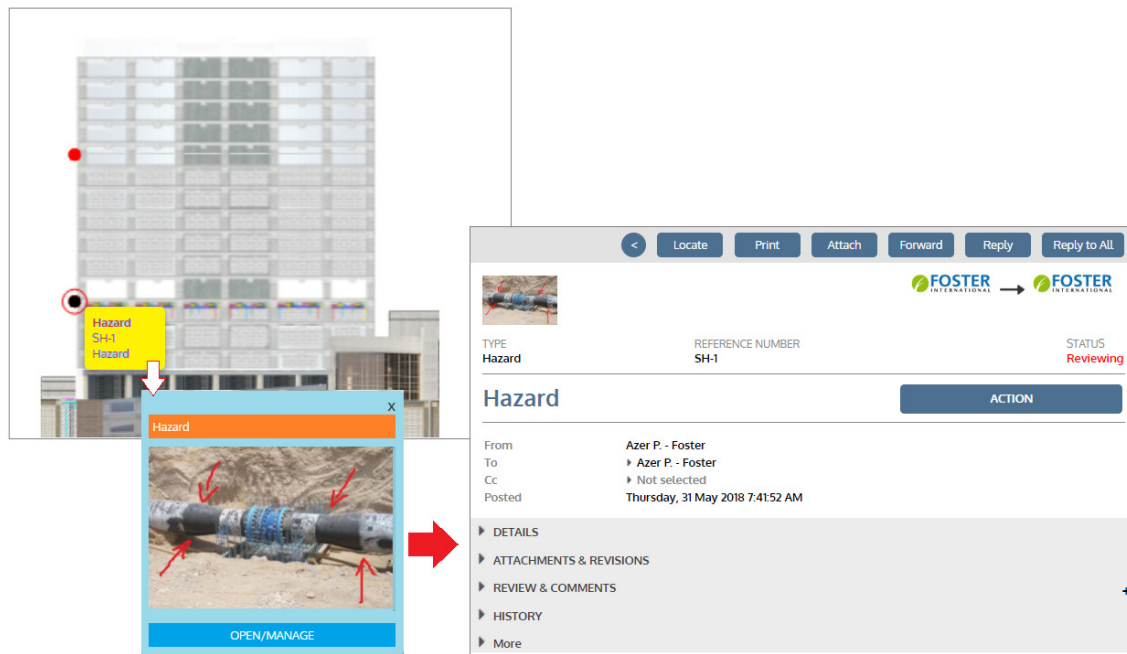
You will be able to view and understand the overall progress of the project at a glance. You will be able to compare the current progress with the planned progress and see if the project is on schedule or not.

With BIM, being able to see the project in 3D and show this to the stakeholders makes it easier to understand and see the consequences of any project decision. Therefore BIM provides the benefits of better communication and quality control for project managers. The communication benefit allows the project manager to communicate with stakeholders more effectively, which is important for confirming a better understanding regarding goals of the project



Project Monitoring:

You will be able to monitor active issues, actions delayed, safety hazards and other different types of progress on the project elevation or on the project drawing. You will be able to see further details of any activity by clicking on it and manage them easily with customised dialog boxes. This feature will help save both time and effort.

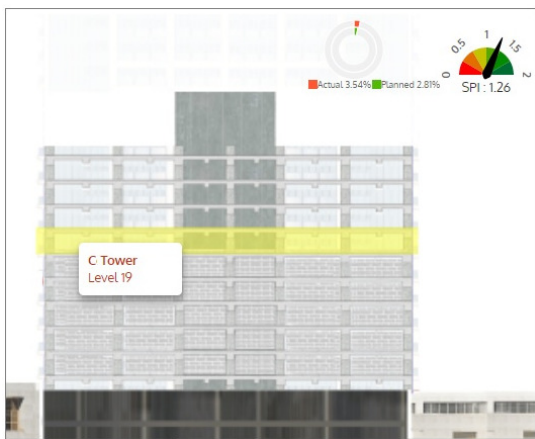


The above picture shows:

1. (left): Highlighting an active issue on the BIM model and showing information on mouse-over.
2. (bottom): Shows details with picture.
3. (right): Manage the active issue.

Level wise monitoring:

You will be able to see active issues, actions delayed, safety hazards, schedule updates, and other different types of progression the project drawing of each level. This feature can help pinpoint the location of any activity without actually visiting the site. It will help in better understanding of project progress and optimise project monitoring.



Keep mouse over on objects to highlight and to get details automatically. Above picture shows highlighting a floor(yellow colour) with mouse tool tip text. Click on the object to get more details as shown below:



RimpeX BIM model also allows you to see project progress on WBS level in the project elevation or on the project drawing of each level, this will help to optimise project management. A recent study by Dodge Data & Analytics showed 43% of surveyed contractors reported more efficient project-wide communication when BIM was implemented. The end result for construction project managers is better project collaboration between engineers, architects, managers and subcontractors on and off the job site.



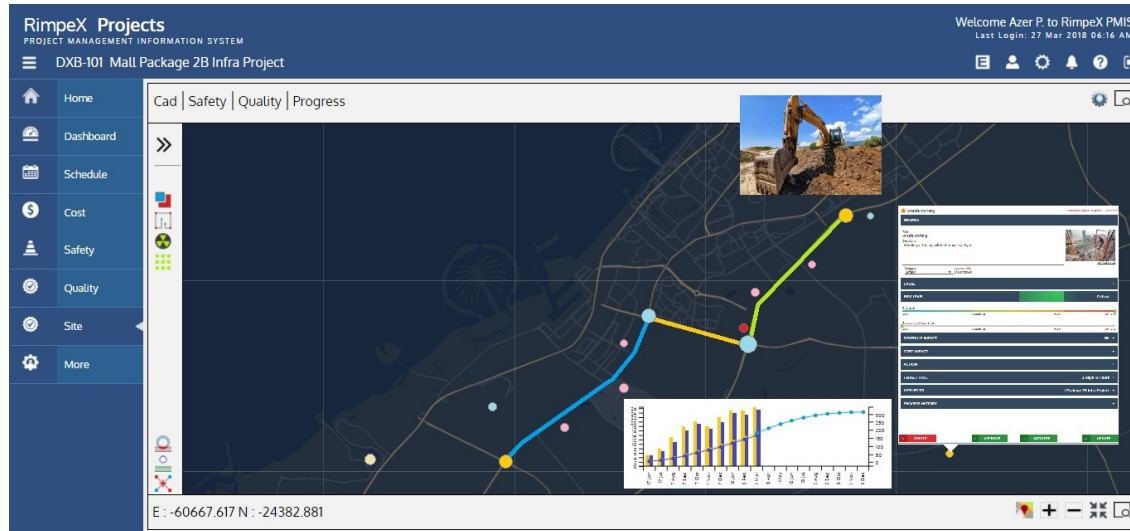
BIM Drawings

The active issues will be displayed on a CAD drawing with various filtering options as shown below. You can also display drawing element details by a click on the object.



BIM dashboard for infrastructure projects

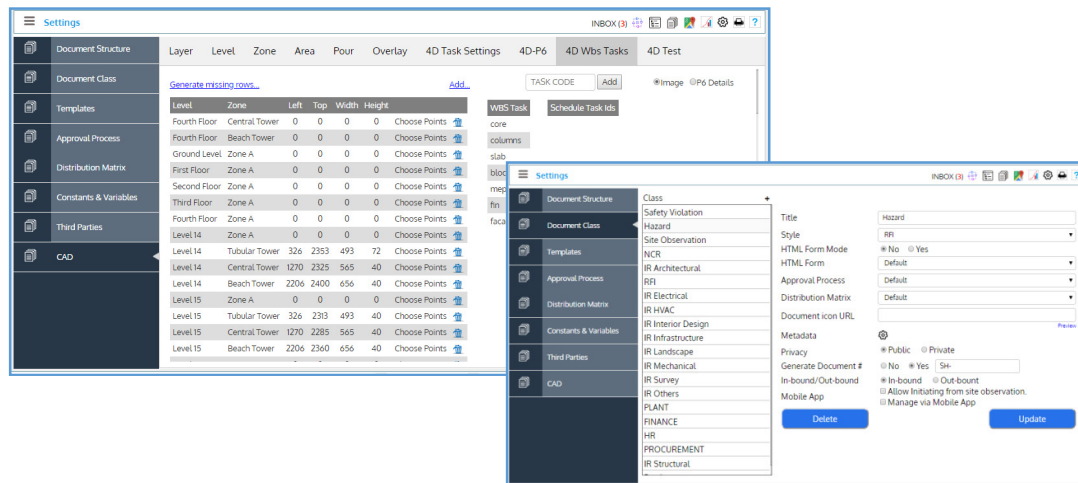
RimpeX has a unique interface for infrastructure projects as shown below. Activities in the drawing with different colours based on the progress status of the activity, active issues in different icons, click on the objects or icons to see more details of the objects, CCTV live views, progress curves, safety KPIs, etc are some of the features of the dashboard.



RimpeX BIM Configuration:

RimpeX BIM configuration consists of the following:

- AutoCAD drawings & Layer configuration
- Level configuration
- Zones & Pour Areas
- Elevation & Overlays
- Primavera WBS configuration
- Primavera Schedule Update



More information will be provided during BIM training session.