

Enterprise Projects Monitoring System



Document Ref: RX-007-RimpeX-EPMS

©RimpeX PMIS

Version: 2018.06

Introduction

RimpeX EPMS is a very useful tool for enterprises having multiple projects. It helps the higher management of the organisation to monitor schedule, cost, quality, delays, critical issues and safety level of all projects. RimpeX EPMS uses histograms, bar diagrams, pie charts etc. to help you gain visual access to huge amounts of data in easily digestible visuals and provide better understanding of the enterprise progress. RimpeX EPMS Enterprise Dashboard helps you to understand the summary of real time progress of all projects using the suitable KPI's. You may drill down to see the project level summary or use RimpeX EPMS Project Dashboard.

A quick glance at the benefits:

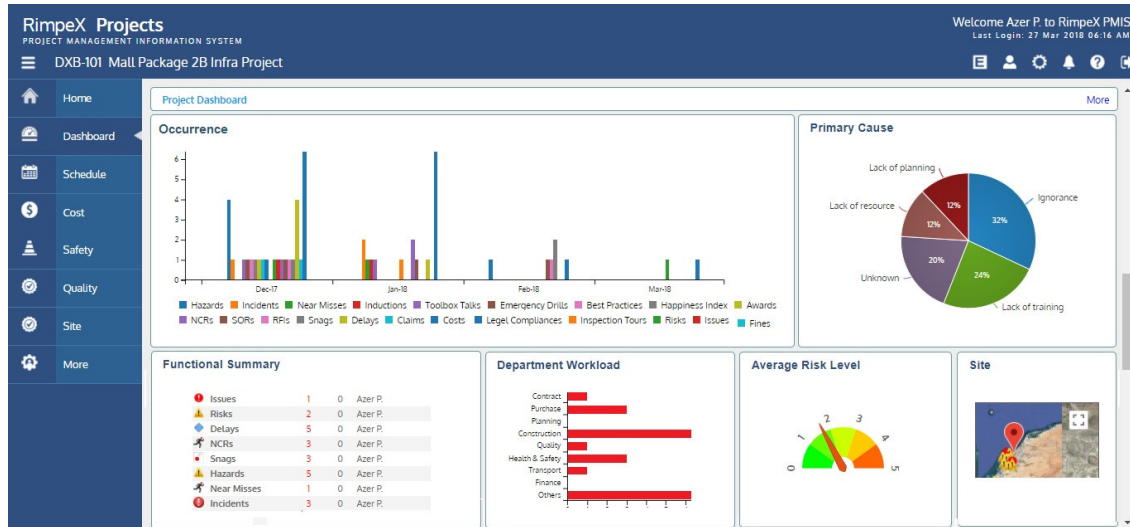
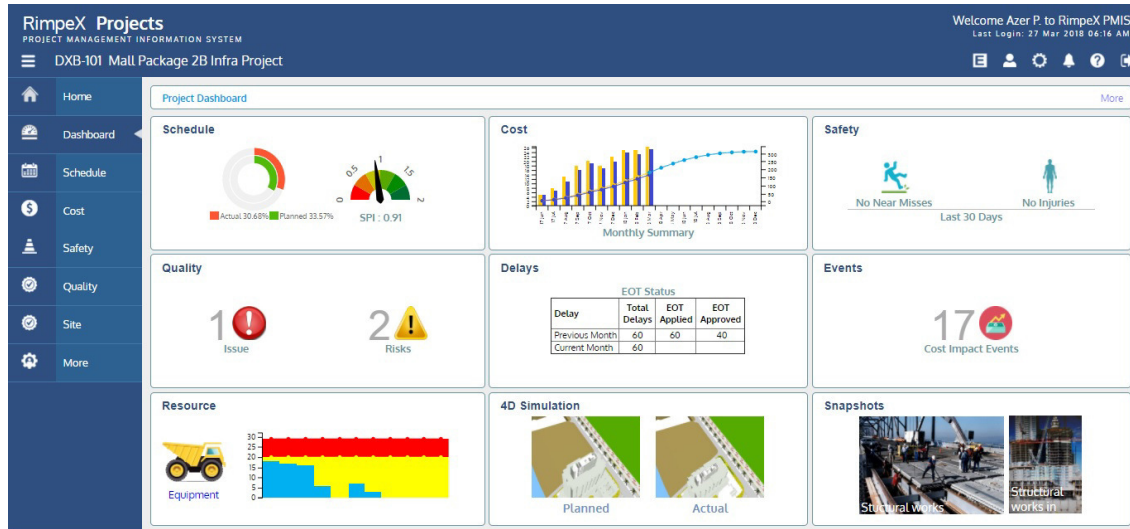
- View the summary of overall performance of the enterprise
- Drill down to see project level summary
- Assist comparative study in various aspects of project level planning
- Uses simple and powerful well-designed data graphics
- Visualization of data provides better understanding of project progress
- Helps you to identify the area in which your organisation needs to focus.

Difference between Enterprise Dashboard and Project Dashboard:

- **RimpeX Project Dashboard:** Displays schedule, cost, quality, delays and safety level, etc. of any ONE selected project. You may drill down to view detailed information of the project level progress and analysis.
- **RimpeX EPMS Enterprise Dashboard:** Displays schedule, cost, quality, delays and safety level, etc. of all projects a single dashboard. You may drill down to see project wise progress and helps in comparative study.

RimpeX EMPS Project Dashboard:

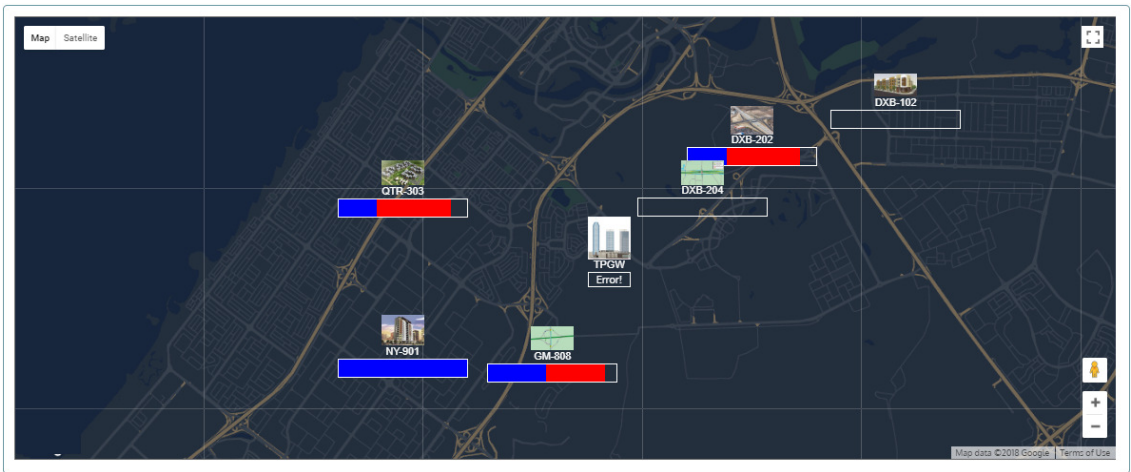
RimpeX Project Dashboard shows you all the summaries and KPIs of a selected project on a single dashboard such as Schedule, Cost, Safety, Quality, Delays, Resources, Risk, Active Issues, etc. A sample of a project dashboard is presented below:



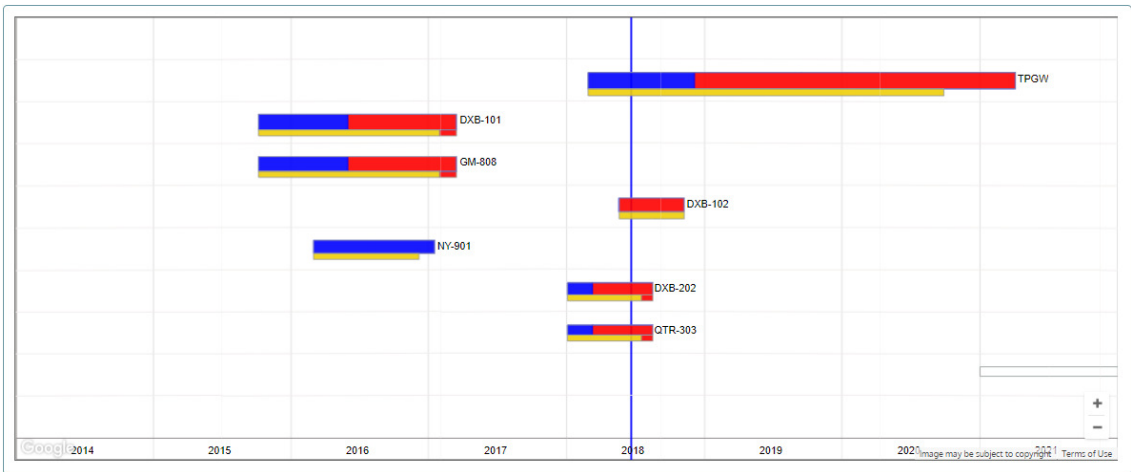
Enterprise Schedule Monitoring:

The interactive RimpeX EMPS Enterprise Dashboard gives the scheduling summary bars of all projects on a geographical map. You can drill down to see Gantt charts, latest schedule updates and pie charts to show actual and planned completion. Summary bar of individual projects also presented on a schedule space diagram consists of time on X axis and size project on Y axis.

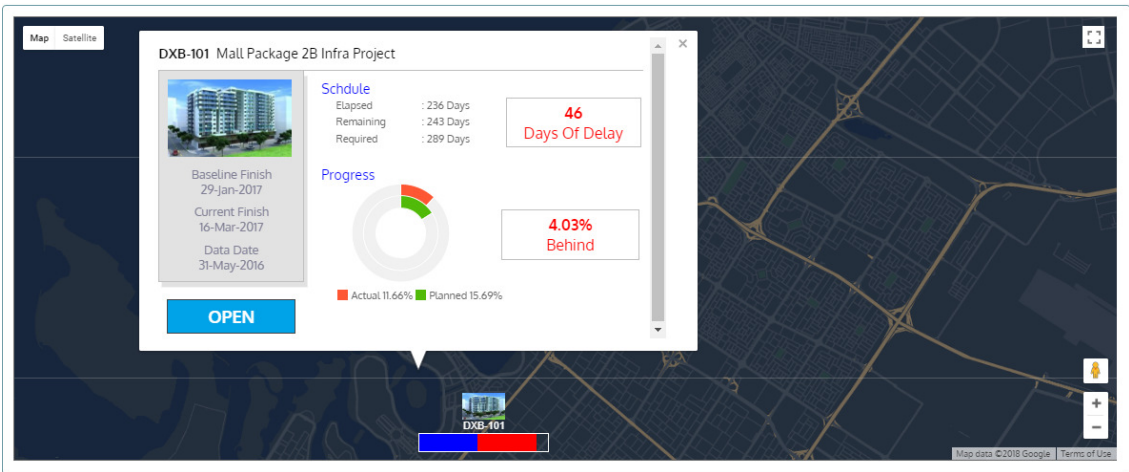
Sample of a Schedule Map Dashboard:



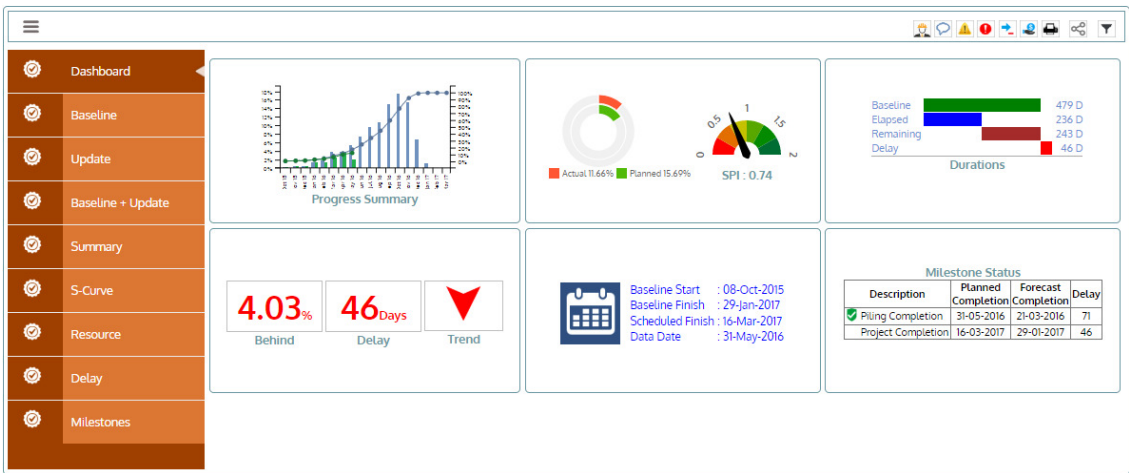
Sample of a Schedule Space Diagram:



When a summary bar is clicked the project summary KPIs will be displayed on a pop-up window as shown below:



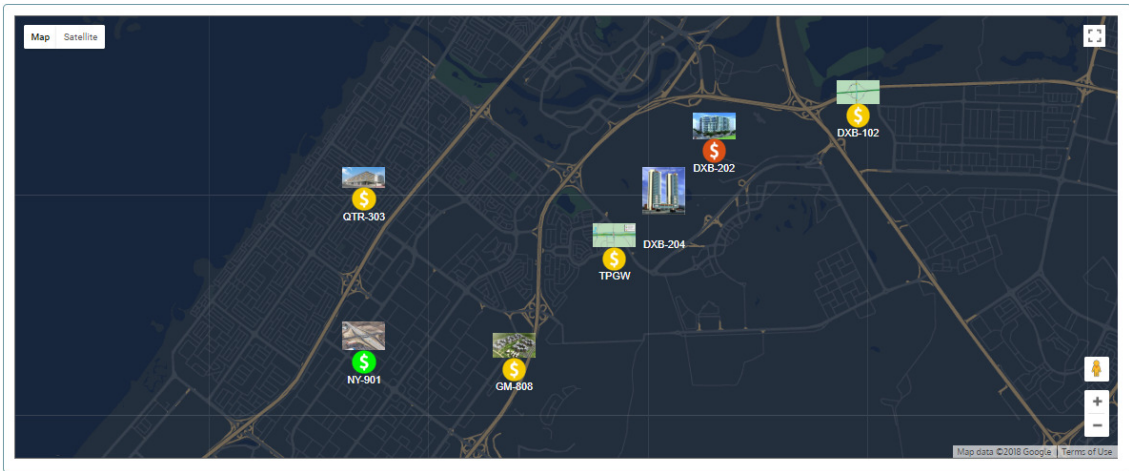
Again you can drill down to see more detail as shown below with various display and filter options to view and manage project schedule updates.



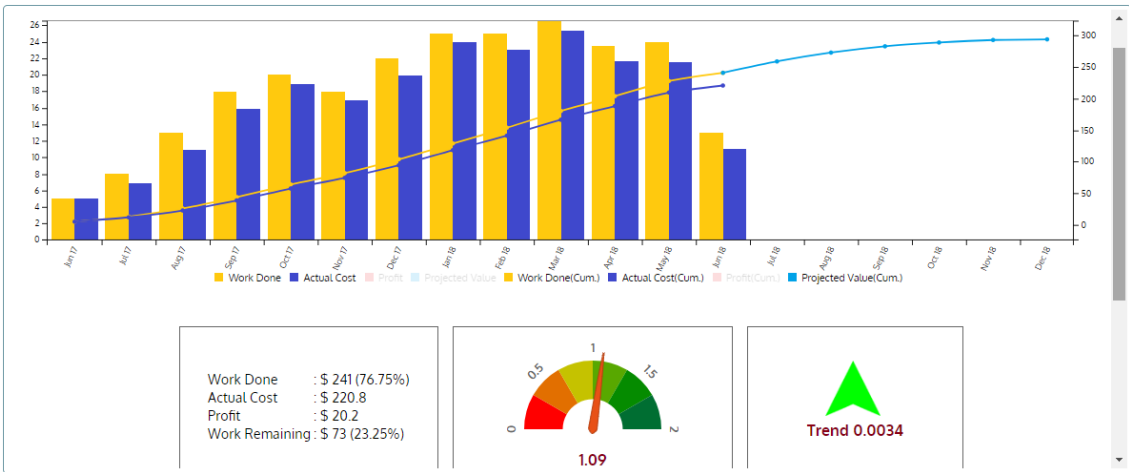
Enterprise Cost Monitoring:

RimpeX EPMS Enterprise Dashboard displays the actual and budgeted cost of all the projects combined. You may drill down to view the costs of each project. This will facilitate comparative study and prompt you to adopt better controlling methods.

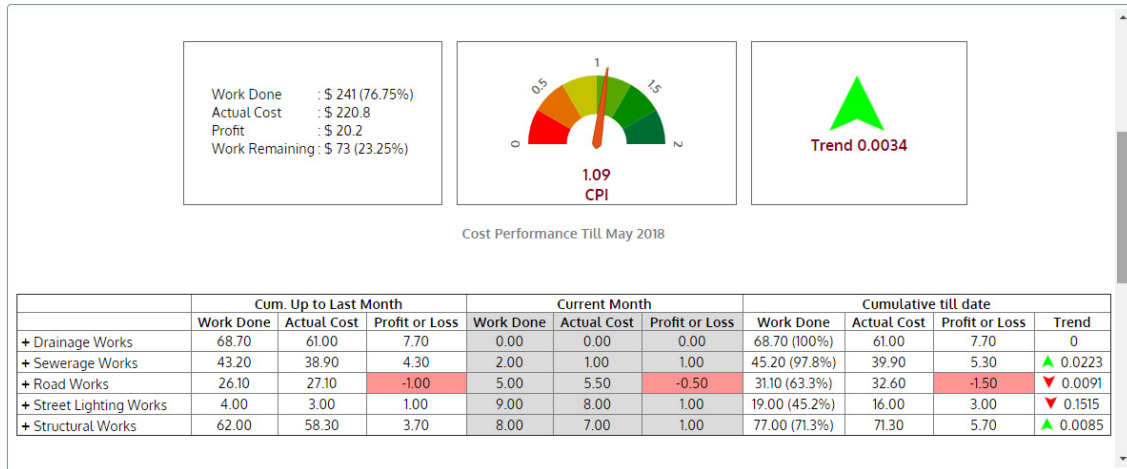
EPMS Cost Monitoring Dashboard shows you various projects with cost performance in different colours as shown below:



Click on a project shows you the summary of cost performance including monthly actual cost and the value of work done:



RimpeX also shows you cost performance index and current trend of the project. BOQ item level cost performance shows in a tabular form. When you expand you can view the cost performance charts of the selected items.

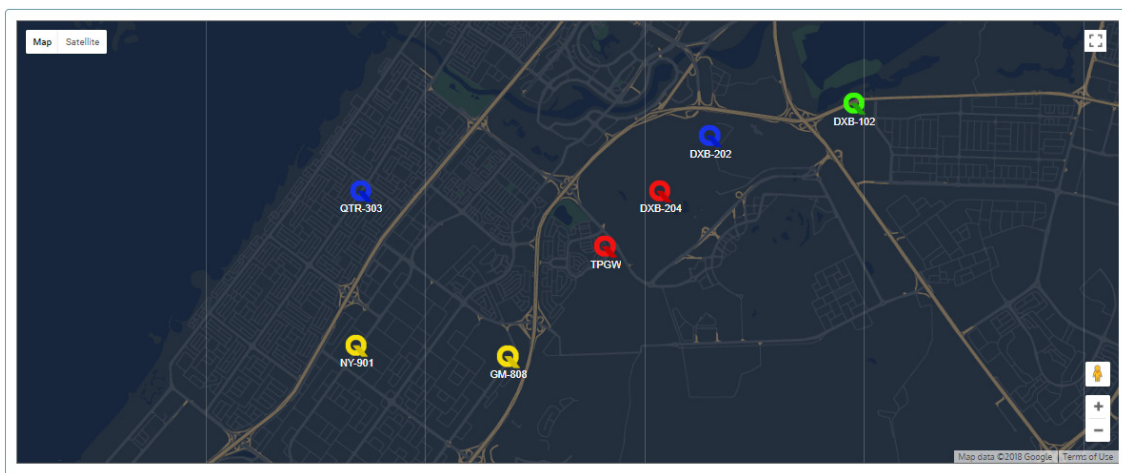


Enterprise Quality Monitoring:

Quality is one of the critical factors in the success of construction projects. The errors on construction projects occur frequently and can be costly for the contractors and owners of constructed facilities. A study conducted in 2015 showed that 6-15% of construction cost was found to be wasted due to rework of defective components detected late during construction and 5% of construction cost is wasted due to rework of defective components detected during maintenance.

This feature helps you to monitor all snags, non-conformances, issues and risks. And help you Identify which projects needs more focus on the quality aspect.

Like other dashboards, the quality performance of different projects will be displayed in different colours and click to see next level details as shown below:



Enterprise Safety Monitoring:

The construction industry is prone to many hazards and accident potential. Most accidents can be avoided by implementing stringent health and safety protocols and ensuring those protocols are constantly maintained.

This feature allows you to monitor safety hazards, incidents and near misses .it also analyses the most frequent type of safety violation reported and identify possible causes.

