

# Rimpex PMIS Schedule



Projects Delivered.  
On-Schedule.

[www.rimpexPMIS.com](http://www.rimpexPMIS.com)



# Customizable, Interactive, Real-time And Prognostic Schedules

## Share

RimpeX Schedule is a cost effective method of sharing schedule updates among the project stakeholders. This system has many features similar to your scheduling software and has a control on latest schedule revisions.

## Monitor

Monitoring the project schedule update is now easy. Schedule updates are only a click away, for all project team members. One can understand what are the critical items, current focus, look-ahead, resource requirements, issues, risks, etc.

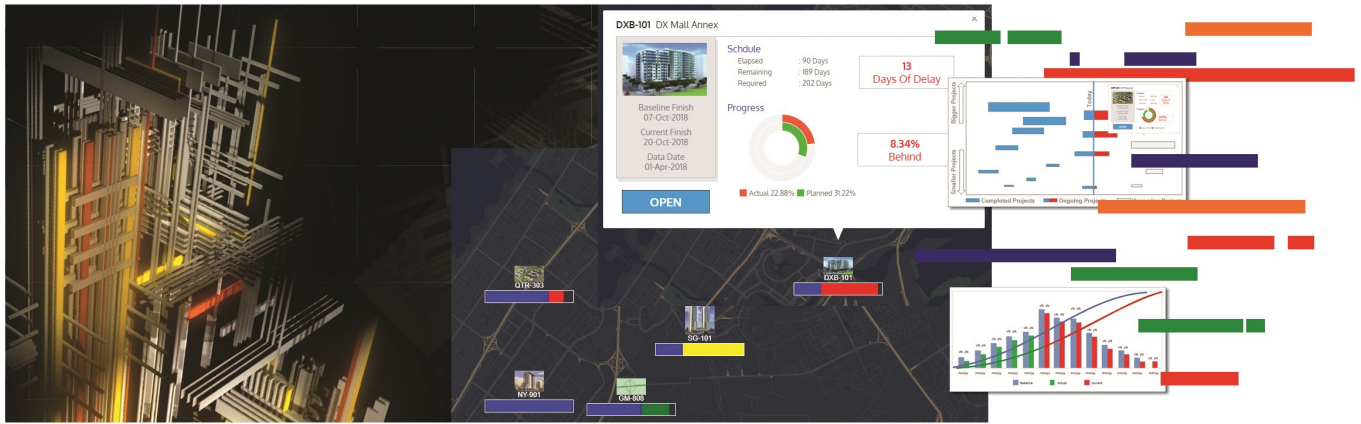
## Collaborate

Get the site update through smart phone apps, understand and update activity progress on mobile phone. Manage progress data between the office and the site.





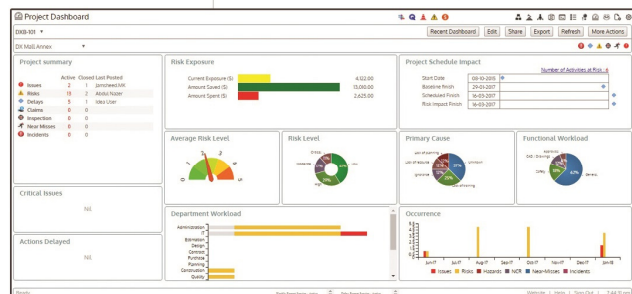
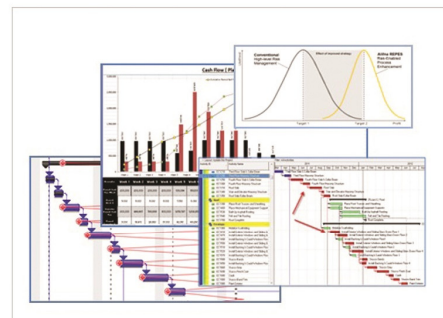
# Enterprise Dashboards



Rimpex Schedule enterprise dashboard allows you to monitor schedule progress of all projects in an organization on a single screen and drill down to see more details. This dashboard gives you a quick understanding of various projects and relative progress performance of different ongoing projects. Rimpex integrates with your present scheduling software updates on real-time basis on Rimpex analytics.

# Project Dashboards

- Risk Events
- Delay Analysis
- Claim Management
- Procurement Tracking
- Milestone Tracking
- Resource Analytics
- Collaboration Tools

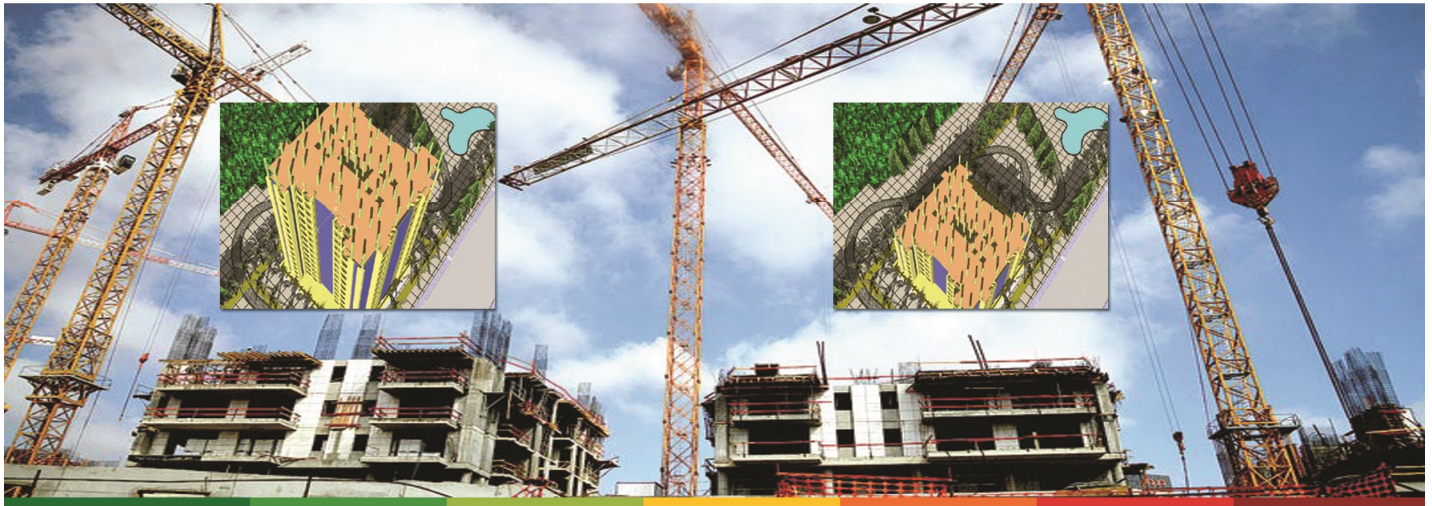


# Rimpex Schedule

Projects Delivered. On-Schedule.

## 4D Simulation

Generate 3D drawings automatically based on the schedule updates



Planned

Actual

## Rimpex PMIS Other Modules

### Rimpex Safety

Deliver Incident-Free Projects.

### Rimpex Quality

Enhance Quality. Enhance Reputation.

### Rimpex Risk

Control Risks. Increase Profits.

### Rimpex Cost

Projects Delivered. On-Budget.

### Rimpex Docs

Your Documents. On-Demand.

Construction | Manufacturing | Facility Management | Oil & Gas

[www.rimpexPMIS.com](http://www.rimpexPMIS.com)

