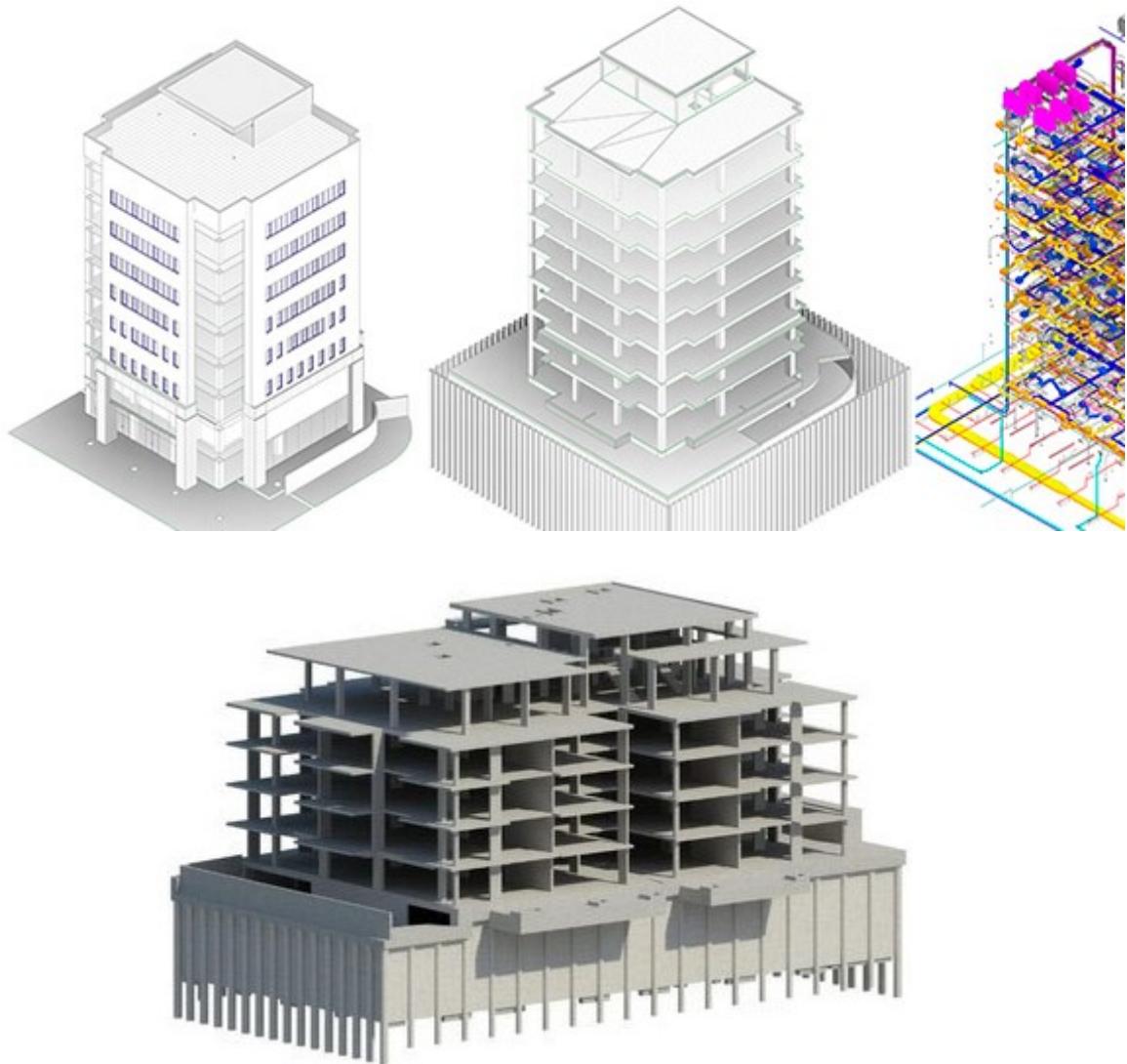


# RimpeX BIM



RimpeX BIM is one of the features of Schedule section of RimpeX PMIS (Project Management Information System)

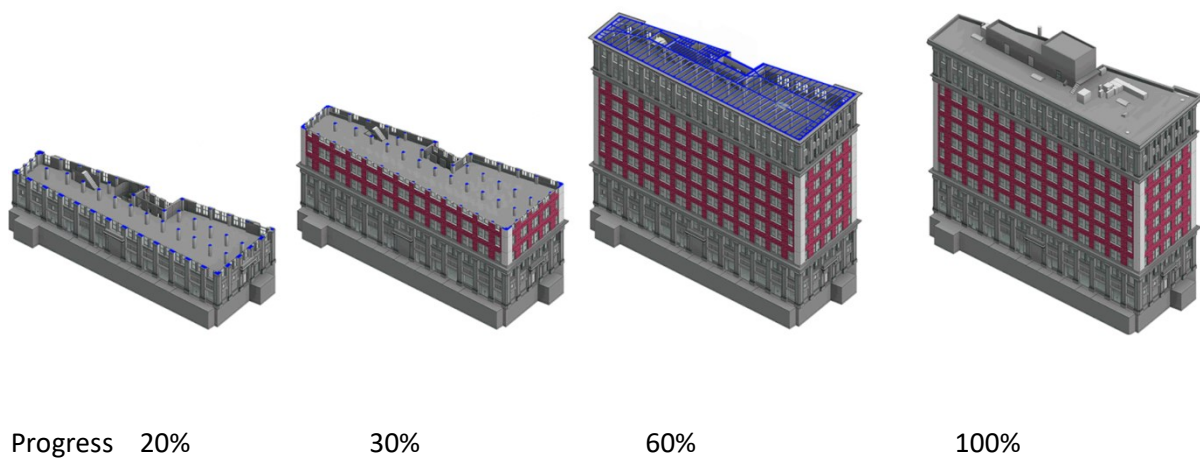
©RimpeX PMIS 2020

Microvera version 2020.04

## Why RimpeX BIM?

Understanding progress by going through large number of activities is not practically possible for everyone. A quick view on the 3D progressive model can understand the progress versus planned. The 4D simulation also gives to the power of understanding the sequence of activities planned. RimpeX BIM also shows you all the related information on the 3D model such as NCR, Progress, Inspections, etc.

By linking your schedule of activities on the 3D elements, you can generate planned & actual views of the 3D on any specified date within the project timeline.



You can do 4D simulation of your project by linking activities with the 3D objects in your 3D model file of your project. If 3D model file is unavailable, you can do this using some template file as described in the user's guide.

### **3D Model Generator**

If you don't have BIM 3D model file of your project, then you can use this method to generate 3D model of your project. It is limited to create simple structures, for more information refer users' guide.

## Suggestions & Support

We welcome your suggestions to improve the system. We are ready to support you online.

For suggestions and support click RimpeX Support from Help menu.

---

RimpeX BIM is one of the features of Schedule section of RimpeX PMIS (Project Management Information System). For more details visit [www.rimpexpmis.com](http://www.rimpexpmis.com)

©RimpeX PMIS 2020