



PROJECT MANAGEMENT BREAKING BOUNDARIES

“Data and analytics is not the next big thing; it's today's big thing. If you don't make the most of it now, you'll fall behind the competition.”

RimpeX DNA

CONTENTS

Technical

1.	Introduction to RimpeX DNA	3
2.	Who it's for?	6
3.	Artificial Intelligence	8
4.	Prediction	10
5.	Project Performance Overview	12
6.	Analysis	13
7.	Explore	14
8.	Custom Analytics	15
9.	Reports	16
10.	Schedule Integration	17
11.	Notifications	18
12.	Mobile App	10
13.	Integration with Oracle Aconex	20

WHAT IS RimpeX DNA?

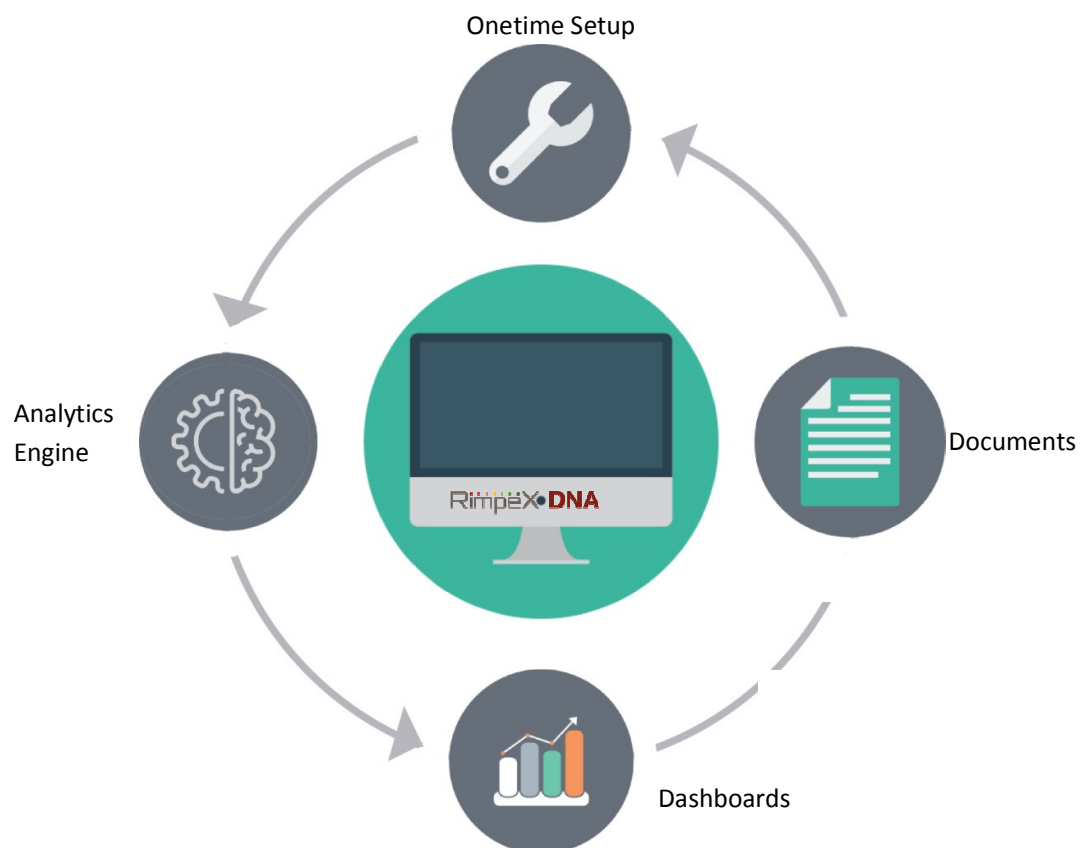
RimpeX DNA brings you the project dashboards completely automated by analyzing enormous construction data flowing every day in your projects. RimpeX DNA does not merely present numbers and figures to management. Our dashboards are purpose-built to be a reliable way to assess and predict project performance and send warning signals, so that project team can intervene swiftly when things are not going according to plan.



ONE TIME SETUP; PROJECT LIFETIME AUTOMATION

We do it without disturbing any of your current systems.

Be it third party or local server or tracking logs in excel worksheets in your pc, RimpeX DNA provides real time reports regardless of where and how your data is stored. The current system of data entry is not disturbed. No additional human effort is required from your part other than of course, viewing the reports and taking necessary actions based on them.



BENEFITS

 Quality Profit Project Control Risks Issues Delays

Rimpex DNA takes you to the next level of confidence and additional benefits that your competitors doesn't have.

- **Automated Predictive Analysis**

- With the help of Artificial Intelligence, pinpoint the potential risks at activity level that could impact the project in terms of cost or time, or both.
- Prognostic data driven analysis helps to understand related processes and gaps to take action before alert at the site.
- Warning signal in advance with a list of expected rework conditions and detailed analysis that leads to this conclusion. This will be a key step to avoid rework and related cost impacts.

- **Automated Performance Analysis**

- Understand quickly the performance of various subcontractors, issues with them, reasons holding them, etc.
- Discipline-wise performance analysis
- Performance analysis and reports of various processes, departments, groups and many more.
- Trend reviews: Trend of various processes, tasks, etc.
- Process reviews: Comparison of various contractual parameters such as review period analytics, etc.
- Process mapping: Identify links between processes – IFC, shop drawings, RFI, WIR, NCR, etc.

- **There is no limit...**

- Not delimited to fixed features, you can customize the analytics and reports to suit your requirements such as claim analysis, variation orders, etc.

FEATURES



- Real-time
- User friendly
- Unlimited users
- Mobile app (Unlimited license)
- Email Alerts (Early warnings on delays, risks, issues, etc...)
- Monthly, weekly, daily reports
- Artificial intelligence integrated
- Reports made effortlessly

Who's it for?

RimpeX DNA has something for everyone in the project, from the CEO to the site operational staff. Drill-down dashboards and reports ensure executives see the big picture across multiple sites, while hands-on personnel are aware of the information that pertains to their specific work environment. This can also be customizable at various user work profiles. Some of them are presented below:

Higher Management

CEO, GM, Directors, etc

- Get a bird's eye view of the health of a project
- Quickly identify the major issues to be addressed by the higher management



Functional Departments

Head of Procurement, Planning, Commercial, Plant, etc

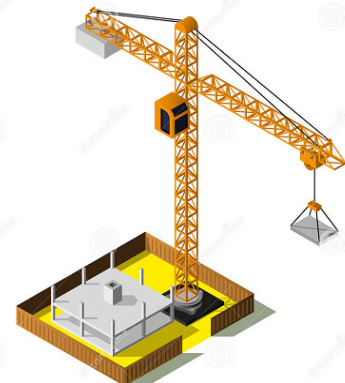
- Identify issues concerned to the respective departments
- Identify potential risks in the upcoming weeks and take precautions



Project Team

Project Manager/Director, Project/Site Engineers, Quality, Safety and all other site/office staff.

- Understand current status of all processes in the project
- Get notification if submittals / closing is delayed
- Identify risks and issues at activity level

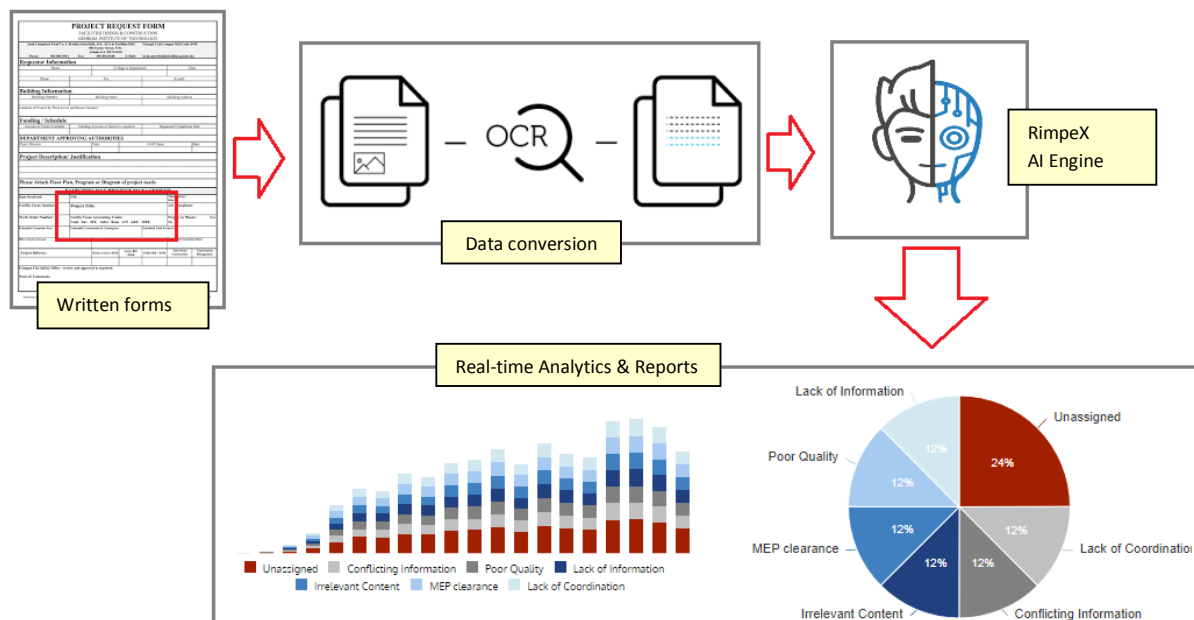


Artificial Intelligence

The numbers of AI solutions applicable to E&C are potentially endless. We've just scratched the surface, and our enhanced analytics platforms can collect and analyze data to understand signals and patterns to deploy real time solution, cuts costs, prioritize preventative maintenance, and prevent unplanned downtime.



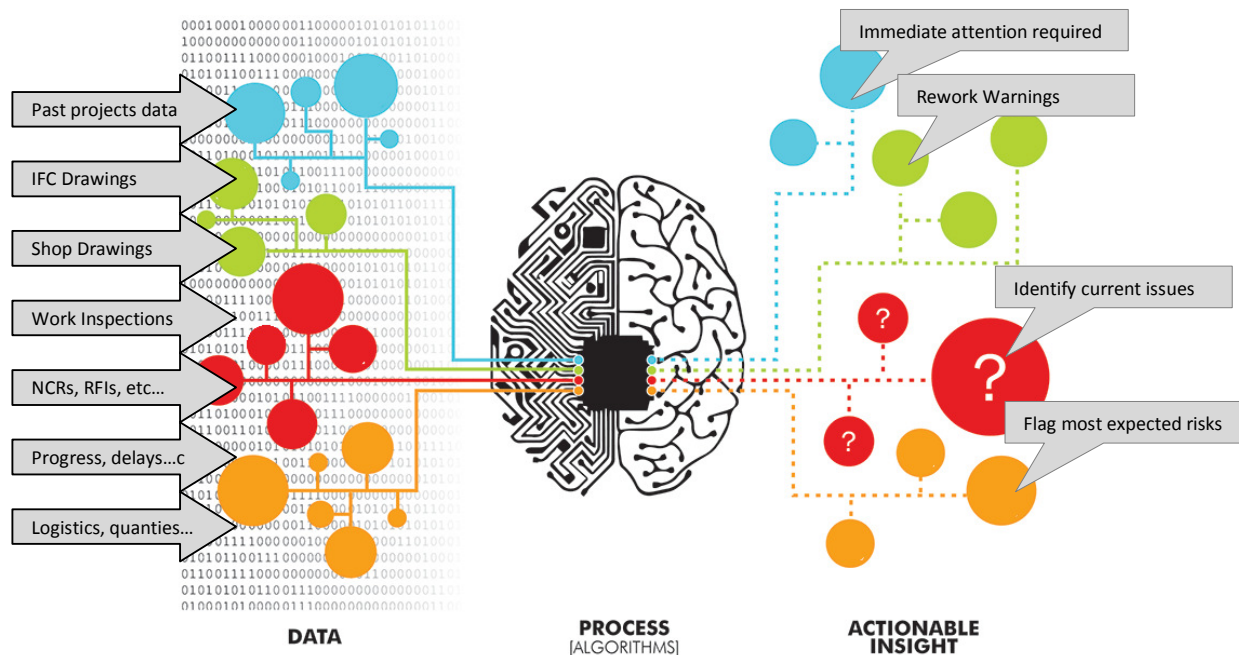
RimpeX DNA uses Artificial Intelligence to capture data from the project documents and analyze them to present in a structured manner.



RimpeX DNA read all documents automatically as a background process, converts the data using OCR technology, AI engine analyzes the data and generates various useful analytics.

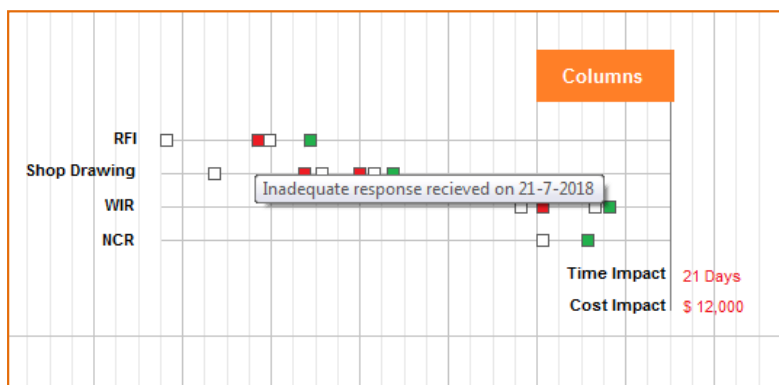
Prediction

Rimpex DNA, with its AI integrated predictive analysis; you will get various useful information that assists in complete the project on time and within budget. Analytics and reports will be generated at various levels by analyzing huge amount of data in the project and utilizing the past data from other similar projects. Some of them are presented below:

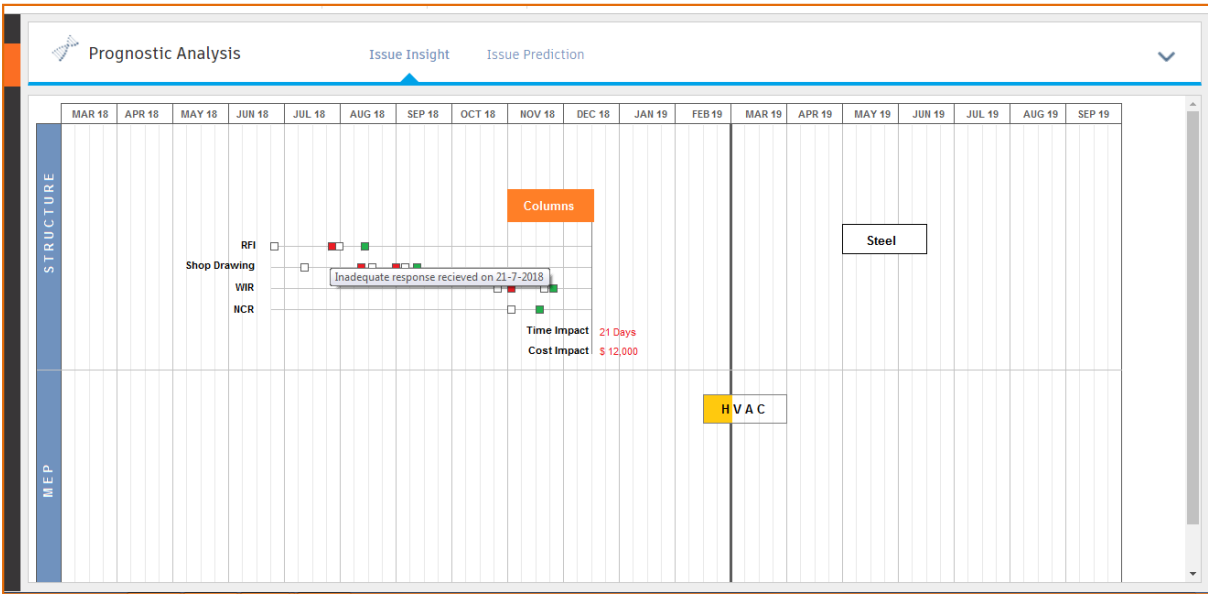


Time and Cost impacts:

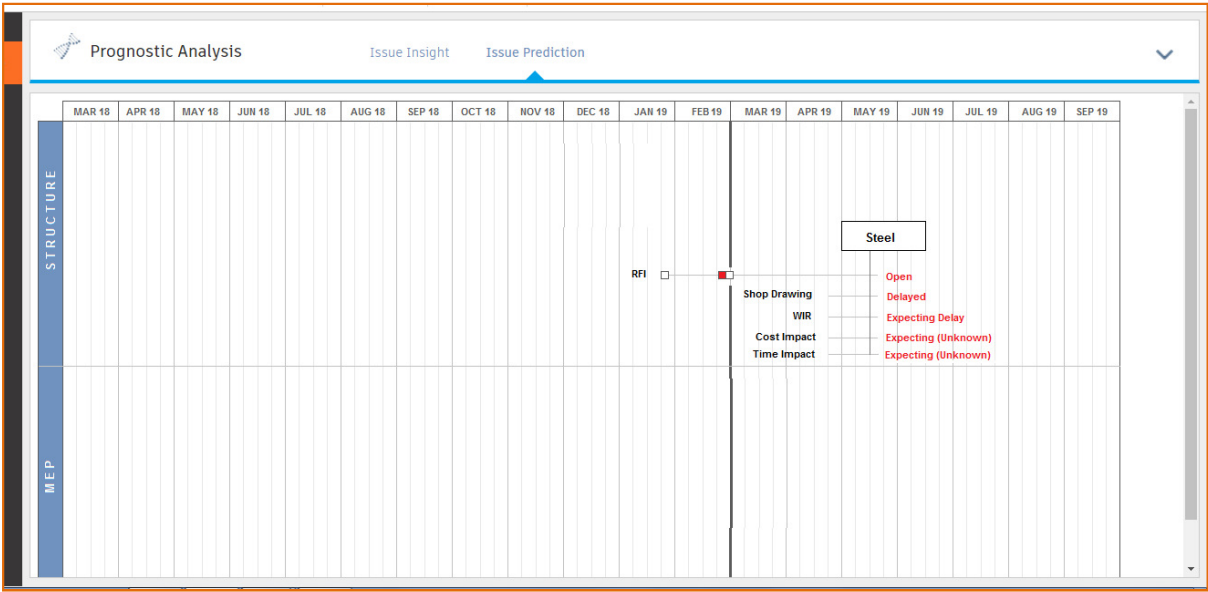
Identify current issues automatically and get associated activities that lead to the issue. Shows time impact and cost impact due to the issue. It will also pull-out all related documents including unstructured data such as letters, COVs, etc.



All such issues will be highlighted on a timescale as shown below:

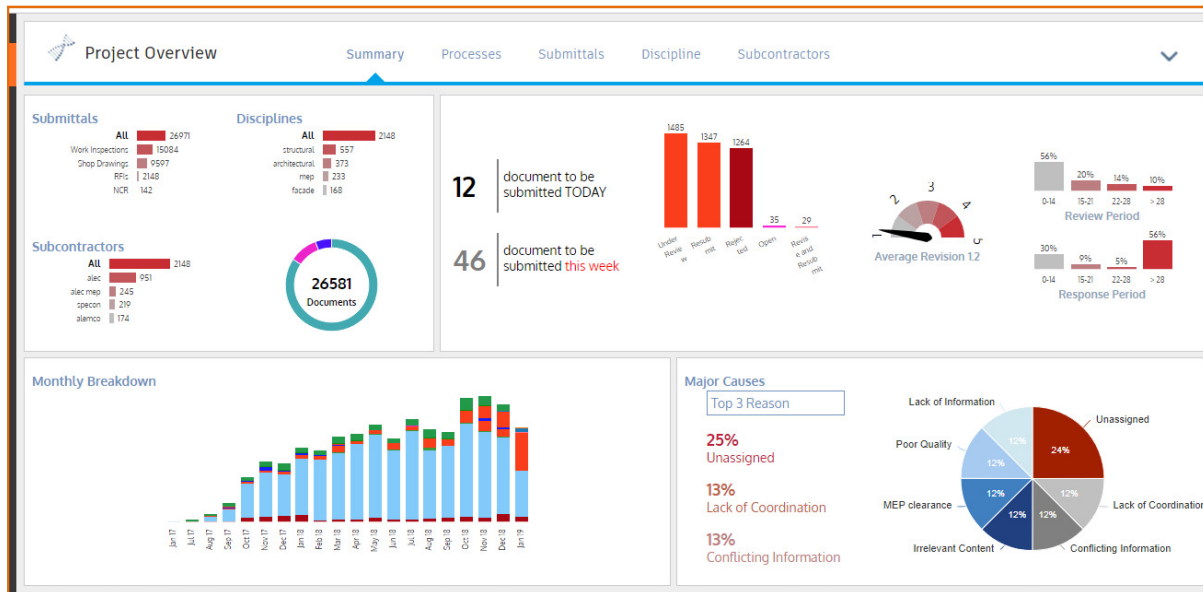


RimpeX predictive analytics shows you the potential risks that could hit the project in a few weeks, its related activities and many more.



Project Performance Overview

Get the complete status of a project on a single click.



Drill-down to get more details on each

- Status of Shop Drawings, Work Inspections, NCR, RFIs, etc
- Subcontractor performance monitoring
- Process performance monitoring
- Discipline-wise status and performance monitoring
- Major causes for rejections
- Monthly status of process/subcontractor/discipline, and more...

Analysis

Detailed and customizable analytics using different data in the project.

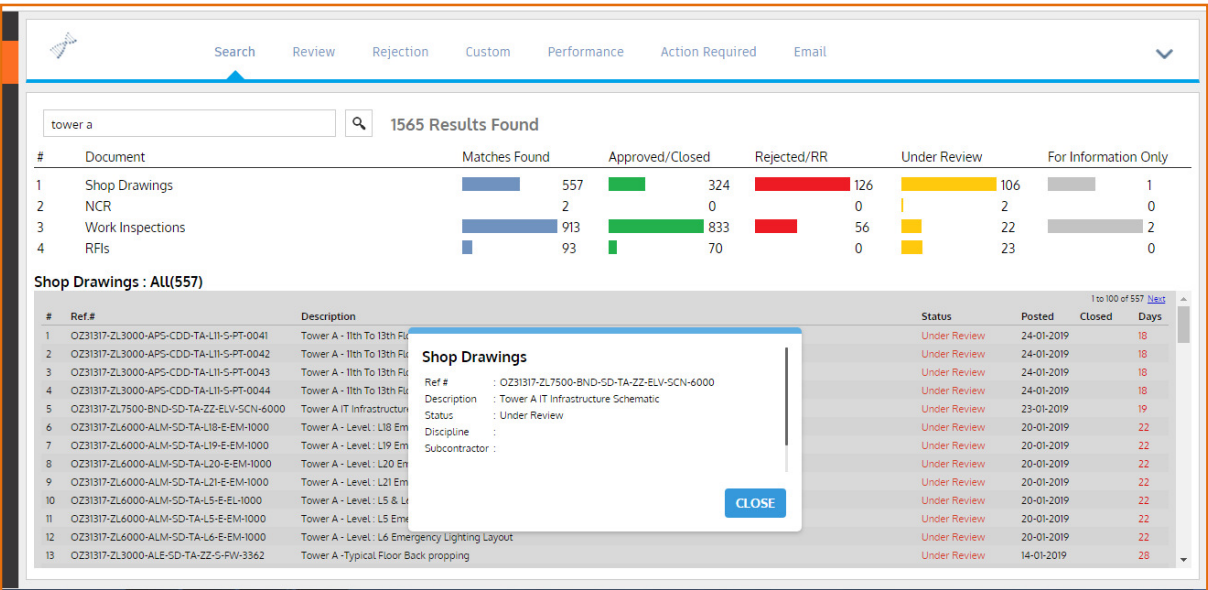


Features:

- Customizable dashboard
- Heat-map, histograms and special charts
- Filtering at any level
- Data splitting options for detailed analysis
- Interactive analytics
- Get multiple data on same charts
- Parametric data presentation without additional input
- Review period and response period analysis
- View / Print dashboards

Explore

Rimpex DNA offers various ways to access more data in your project based on your objectives.

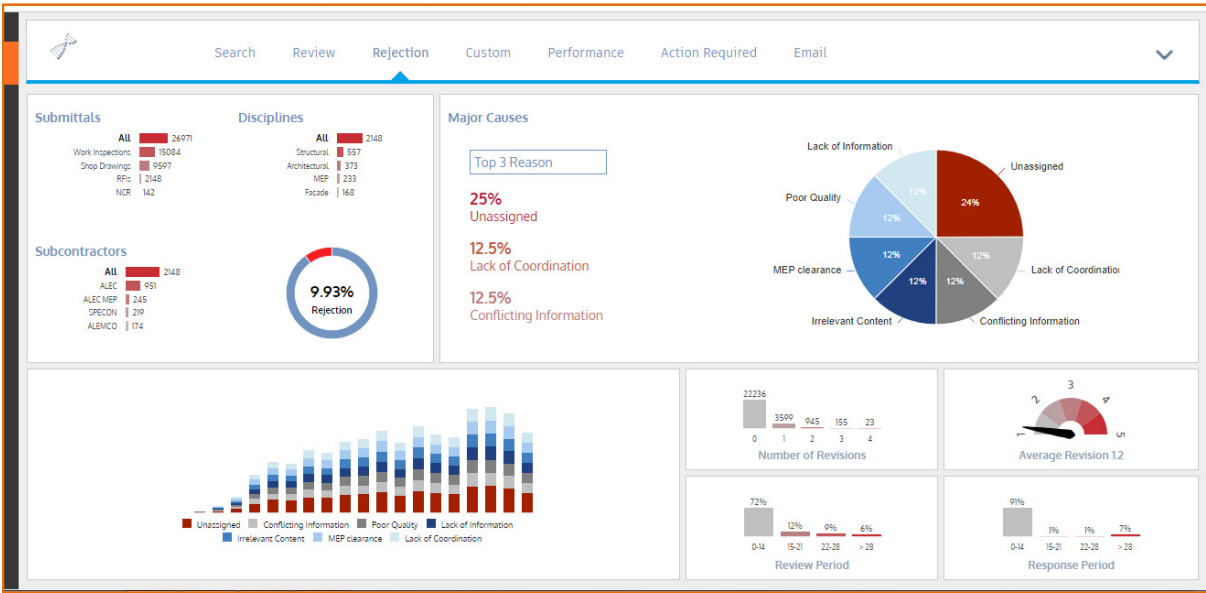


You can find all documents related to certain topics or issues. It has no limit, you can search anything in the project and all documents related to the subject will be listed and can be viewed or downloaded.

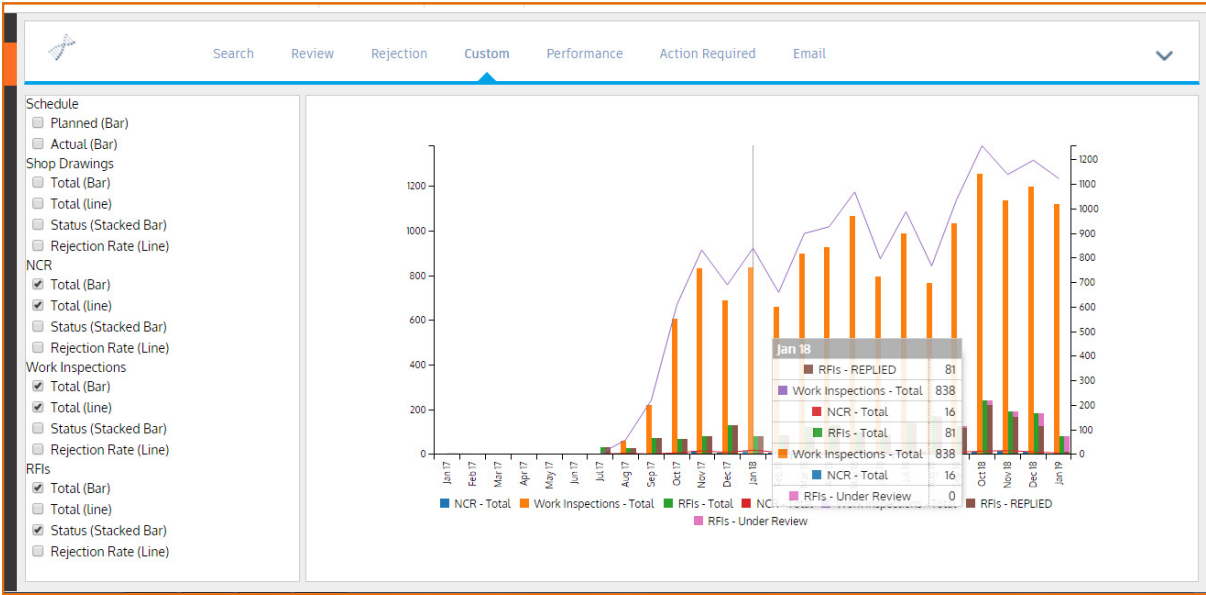
Custom Analytics

Rimpex DNA has no limit for analytics. You can generate as many analytics or dashboards as you need in your project.

Example: The following analytics shows reasons for rejections and analysis

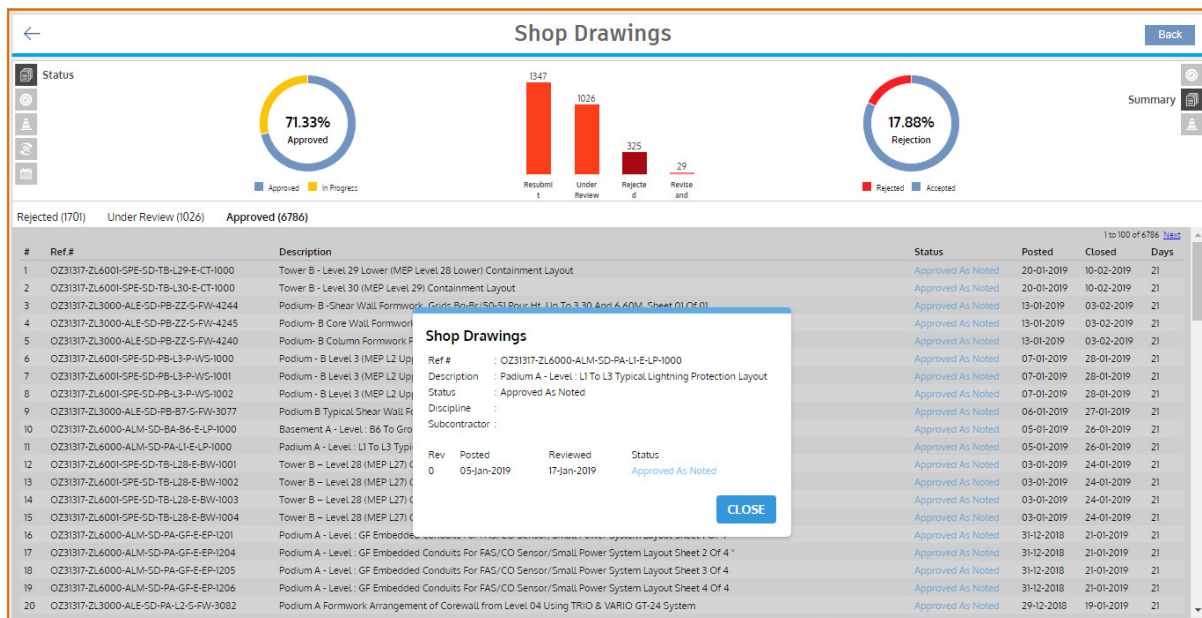
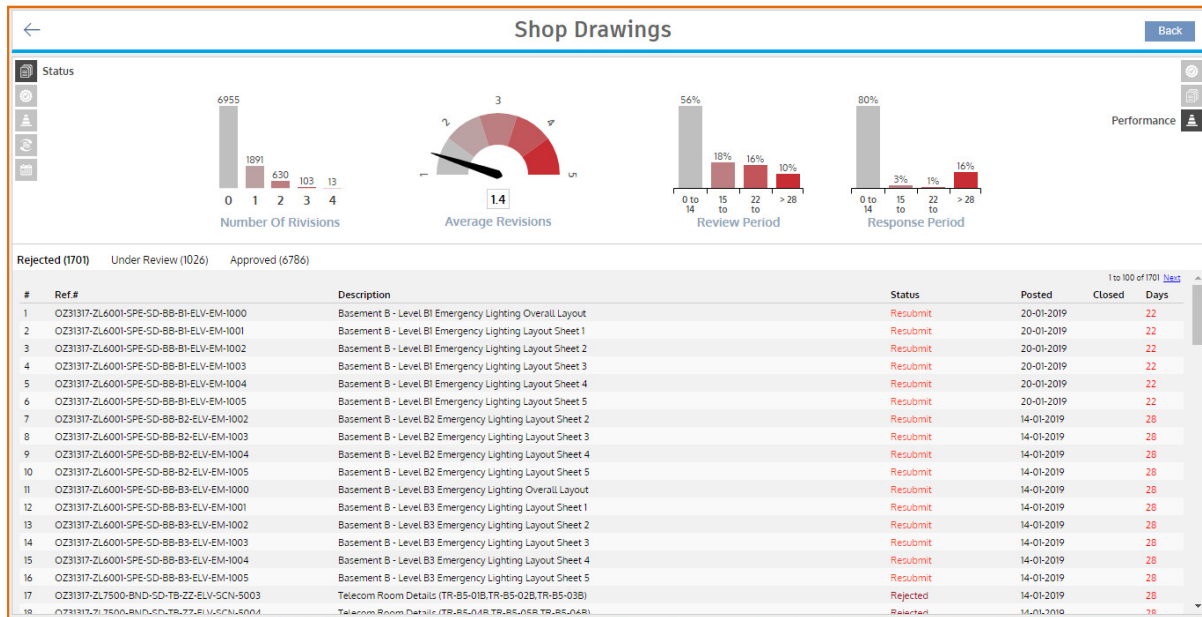


Example: Another customized dashboard



Reports

You can generate various reports on screen, print or email.

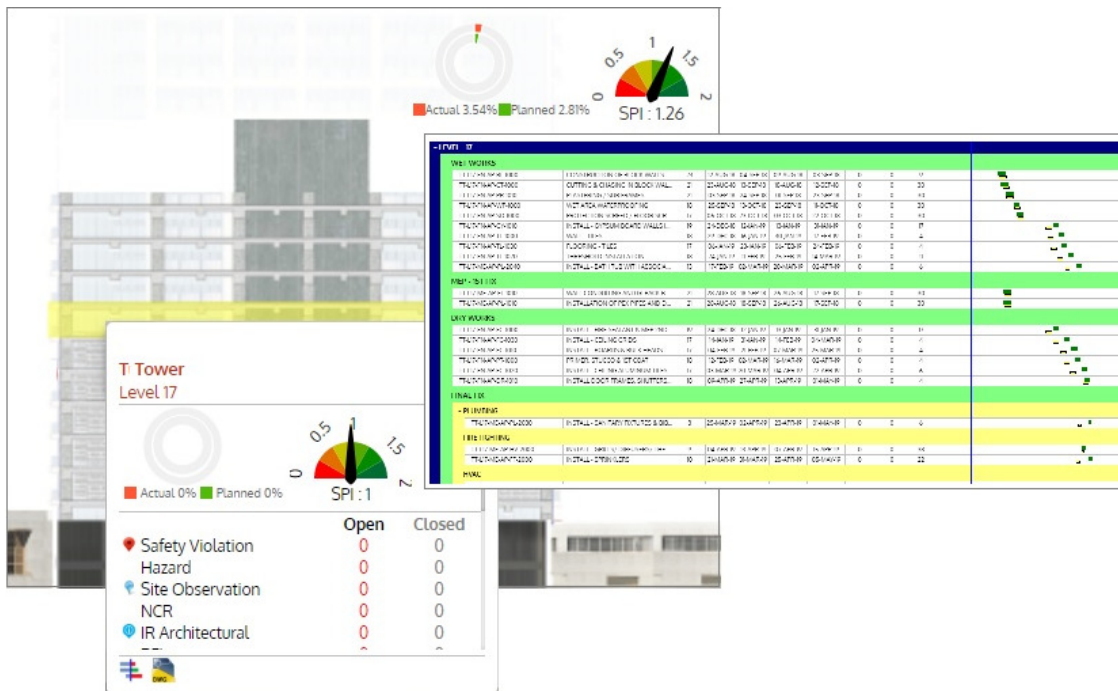


Schedule Integration

Visualization of progress and delays of various processes on the project elevation with drill-down feature.



Progress visualization will be performed automatically based on the latest schedule update in Primavera.



Notifications



You will receive email notifications in various cases.

- Delay notifications
- Issue notifications
- Daily reports
- Weekly reports
- Monthly reports
- Quarterly reports

Mobile App

You can access the analytics anywhere anytime and purpose built mobile apps will show you quick and summarized information.



- All features are available on the mobile app
- No special device is required
- Android / iOS devices.

Integration with Aconex

RimpeX DNA is fully integrated with Oracle-Aconex. No data to be entered or read from other systems if your projects are running with Aconex



RimpeX DNA can be hosted in the company server or in RimpeX server.



“It ‘s apparent that project management stills lacks transparency and has too many gaps in policies, procedures and controls. What is needed is a more reliable way to accurately assess and predict project performance, and send out early warnings, so that project teams can intervene swiftly when things aren’t going according to plan.”

KPMG Global Construction Survey 2017
kpmg.com/gcs

www.rimpexPMIS.com
www.rimpexDNA.com